

TECHNICAL MANUAL

OPERATOR'S, UNIT, DIRECT SUPPORT,
AND GENERAL SUPPORT
MAINTENANCE REPAIR PARTS AND SPECIAL TOOLS LIST

AIR CONDITIONER, HORIZONTAL COMPACT,
18,000 BTU/HR
230 VOLT, 1 PHASE, 50/60 HERTZ,
ENVIRONMENTAL SYSTEMS S9150-18KH-1
NSN 4120-01-523-4131 (EIC N/A)

AND

AIR CONDITIONER, HORIZONTAL COMPACT,
18,000 BTU/HR
208 VOLT, 3 PHASE, 50/60 HERTZ,
ENVIRONMENTAL SYSTEMS S9160-18KH-3
NSN 4120-01-523-4472 (EIC N/A)

DISTRIBUTION STATEMENT A: Approved for public release; distribution is unlimited.

HEADQUARTERS, DEPARTMENT OF THE ARMY

31 OCTOBER 2006

INSERT LATEST CHANGED PAGES / WORK PACKAGES. DESTROY SUPERSEDED DATA.

LIST OF EFFECTIVE PAGES / WORK PACKAGES

NOTE: The portion of text affected by the changes is indicated by a vertical line in the outer margins of the page. Changes to illustrations are indicated by miniature pointing hands. Changes to wiring diagrams are indicated by shaded areas.

Dates of issue for original and changed pages / work packages are:

Original.....0.....31 Oct 06

TOTAL NUMBER OF PAGES FOR FRONT AND REAR MATTER IS 21 AND
TOTAL NUMBER OF WORK PACKAGES IS 26 CONSISTING OF THE FOLLOWING:

Page/WP No.	*Change No.	Page/WP No.	*Change No.	Page/WP No.	*Change No.
Title.....	0				
A	0				
B Blank.....	0				
i – iii	0				
iv Blank.....	0				
WP 0001 00 (7 pgs)	0				
WP 0002 00 (2 pgs)	0				
WP 0003 00 (2 pgs)	0				
WP 0004 00 (2 pgs)	0				
WP 0005 00 (2 pgs)	0				
WP 0006 00 (2 pgs)	0				
WP 0007 00 (3 pgs)	0				
WP 0008 00 (5 pgs)	0				
WP 0009 00 (2 pgs)	0				
WP 0010 00 (2 pgs)	0				
WP 0011 00 (2 pgs)	0				
WP 0012 00 (2 pgs)	0				
WP 0013 00 (2 pgs)	0				
WP 0014 00 (2 pgs)	0				
WP 0015 00 (2 pgs)	0				
WP 0016 00 (2 pgs)	0				
WP 0017 00 (2 pgs)	0				
WP 0018 00 (2 pgs)	0				
WP 0019 00 (2 pgs)	0				
WP 0020 00 (3 pgs)	0				
WP 0021 00 (3 pgs)	0				
WP 0022 00 (3 pgs)	0				
WP 0023 00 (11 pgs)	0				
WP 0024 00 (4 pgs)	0				
WP 0025 00 (4 pgs)	0				
WP 0026 00 (2 pgs)	0				

*Zero in this column indicates an original page or work package.

HEADQUARTERS,
DEPARTMENT OF THE ARMY
WASHINGTON, D.C., 31 October 2006

TECHNICAL MANUAL

**OPERATOR'S, UNIT, DIRECT SUPPORT,
AND GENERAL SUPPORT
MAINTENANCE REPAIR PARTS AND SPECIAL TOOLS LIST**

**AIR CONDITIONER, HORIZONTAL COMPACT,
18,000 BTU/HR
230 VOLT, 1 PHASE, 50/60 HERTZ,
ENVIRONMENTAL SYSTEMS S9150-18KH-1
NSN 4120-01-523-4131 (EIC N/A)
AND
AIR CONDITIONER, HORIZONTAL COMPACT,
18,000 BTU/HR
208 VOLT, 3 PHASE, 50/60 HERTZ,
ENVIRONMENTAL SYSTEMS S9160-18KH-3
NSN 4120-01-523-4472 (EIC N/A)**

REPORTING ERRORS AND RECOMMENDING IMPROVEMENTS

You can help improve this manual. If you find any mistakes or if you know of a way to improve the procedures, please let us know. We'd prefer that you submit your recommended changes electronically, either by e-mail (AMSEL-LC-LEO-PUBS-CHG@mail1.monmouth.army.mil) or online (<http://edm.monmouth.army.mil/pubs/2028.html>). Alternatively, you may mail or fax your letter, DA Form 2028 (Recommended Changes to Publications and Blank Forms) to: US Army Communications-Electronics Life Cycle Management Command(CE-LCMC) and Fort Monmouth, ATTN: AMSEL-LC-LEO-E-ED-P, Fort Monmouth, NJ 07703-5006. The fax number is 732-532-3421, DSN 992-3421.

In any case, we will send you a reply.

DISTRIBUTION STATEMENT A: Approved for public release; distribution is unlimited.

TABLE OF CONTENTS

	<u>WP Sequence No.</u>
INTRODUCTION.....	0001 00
GROUP 00 AIR CONDITONER (Figure 1).....	0002 00
GROUP 01 and 0101 HOUSING, COVERS, PANELS, AND SCREENS Housing, Covers, Panels, Grills, and Screens (Figure 2)	0003 00
GROUP 0103 AND 0201 LOUVERS AND AIR INTAKE FILTER Louver, Condenser Air Discharge (Figure 3)	0004 00
Louvers, Air Intake Filter, and Mist Eliminator (Figure 4).....	0005 00
GROUP 0104 CONDENSATE DRAIN TUBE ASSEMBLY (Figure 5)	0006 00
GROUP 0202 FRESH AIR DAMPER ASSEMBLY (Figure 6).....	0007 00
GROUP 03, 0302 AND 0303 ELECTRICAL COMPONENTS JUNCTION BOX ASSEMBLY AND WIRING HARNESS Junction Box and Electrical Components (Figure 7).....	0008 00
GROUP 0301 REMOTE CONROL MODULE (Figure 8)	0009 00
GROUP 03 ELECTRICAL COMPONENTS Circuit Breaker Assembly (Figure 9)	0010 00
GROUP 04 EVAPORATOR FAN MOTOR AND HEATER	
GROUP 0401 EVAPORATOR FAN ASSEMBLY (Figure 10)	0011 00
GROUP 0402 ELECTRICAL HEATING COMPONENTS S3 Heater Cutout Switch and Heater Elements (Figure 11)	0012 00
GROUP 05 CONDENSER FAN AND MOTOR (Figure 12)	0013 00
GROUP 06 COMPRESSOR ASSEMBLY Compressor (Figure 13)	0014 00
Capacitor Assembly, S9150-18K-1 Unit (Figure 14).....	0015 00
GROUP 07 REFRIGERATION COMPONENTS Filter-Dryer and Liquid Line Solenoid Valve (Figure 15)	0016 00
Pressure Switches, Pressure Relief Valve, and Service Valves (Figure 16).....	0017 00
Condenser Coil, Liquid Sight Indicator, and Receiver (Figure 17).....	0018 00
Evaporator Coil and Thermal Expansion Valve (Figure 18).....	0019 00
Actuator, Louver, Condenser Air Discharge (Figure 19).....	0020 00
Tubing and Fittings (Figure 20)	0021 00
GROUP 08 GENERAL USE STANDARDIZE PARTS	
GROUP 0801 BULK MATERIAL Insulation (Figure 21)	0022 00
Bulk Material.....	0023 00
NATIONAL STOCK NUMBER INDEX.....	0024 00

PART NUMBER INDEX	0025 00
REFERENCE DESIGNATOR INDEX	0026 00

**OPERATOR'S, UNIT, DIRECT SUPPORT,
AND GENERAL SUPPORT MAINTENANCE
AIR CONDITIONER, HORIZONTAL COMPACT,
18,000 BTU/HR
230 VOLT, 1 PHASE, 50/60 HERTZ,
ENVIRONMENTAL SYSTEMS S9150-18KH-1
NSN 4120-01-523-4131 (EIC N/A)**

**AIR CONDITIONER, HORIZONTAL COMPACT,
18,000 BTU/HR
208 VOLT, 3 PHASE, 50/60 HERTZ,
ENVIRONMENTAL SYSTEMS S9160-18KH-3
NSN 4120-01-523-4472 (EIC N/A)
INTRODUCTION**

SCOPE

This RPSTL lists and authorizes spares and repair parts; special tools; special test, measurement, and diagnostic equipment (TMDE); and other special support equipment required for performance of unit, direct support, and general support maintenance of the S9150-18KH-1 Air Conditioner, Compact, Horizontal, 18,000 BTU/Hr, 230 Volt, 1 Phase, 50/60 Hz and S9160-18KH-3 Air Conditioner, Compact, Horizontal, 18,000 BTU/Hr, 208 Volt, 3 Phase, 50/60 Hz. It authorizes the requisitioning, issue, and disposition of spares, repair parts and special tools as indicated by the source, maintenance, and recoverability (SMR) codes.

GENERAL

In addition to the Introduction work package, this Repair Parts and Special Tools List is divided into the following work packages.

1. Repair Parts List Work Packages. Work packages containing lists of spares and repair parts authorized by this RPSTL for use in the performance of maintenance. The list also includes parts which must be removed for replacement of the authorized parts. Parts lists are composed of functional groups in ascending alphanumeric sequence, with the parts in each group listed in ascending figure and item number sequence. Sending units, brackets, filters, and bolts are listed with the component they mount on. Bulk materials are listed by item name in FIG. BULK at the end of the work packages. Repair parts kits are listed separately in their own functional group and work package. Repair parts for reparable special tool are also listed in a separate work package. Items listed are shown on the associated illustrations.
2. Special Tools List Work Packages. - Not Applicable.
3. Cross-Reference Indexes Work Packages. There are three cross-reference indexes work packages in this RPSTL. The National Stock Number (NSN) Index work package, the Part Number (P/N) Index work package, and the Reference Designator Index work package. The National Stock Number Index work package refers you to the figure and item number. The Part Number Index work package refers you to the figure and item number. The Reference Designator Index work package refers you to the figure and item number.

EXPLANATION OF COLUMNS IN THE REPAIR PARTS LIST AND SPECIAL TOOLS LIST WORK PACKAGES

ITEM NO. (Column (1)). Indicates the number used to identify items called out in the illustration.

SMR CODE (Column (2)). The Source, Maintenance, and Recoverability (SMR) code containing supply/requisitioning information, maintenance level authorization criteria, and disposition instruction, as shown in the following breakout:

<u>Source Code</u>	<u>Maintenance Code</u>	<u>Recoverability Code</u>
<u>XX</u>	<u>XX</u>	<u>X</u>
1st two Positions: how to get an item.	3 rd position: who can install, replace, or use the item.	4 th position: Who can do complete repair* on the item
		5 th position: Who determines disposition action on unserviceable items.

*Complete Repair: Maintenance capacity, capability, and authority to perform all corrective maintenance tasks of the "Repair" function in a use/user environment in order to restore serviceability to a failed item.

Source Code. The source code tells you how to get an item needed for maintenance, repair, or overhaul of an end item/equipment. Explanations of source codes follow:

<u>Source Code</u>	<u>Application/Explanation</u>
PA	Stocked items; use the applicable NSN to request/requisition items with these source codes. They are authorized to the category indicated by the code entered in the 3d position of the SMR code.
PB	
PC**	
PD	
PE	
PF	
PG	
KD	
KF	
KB	
	NOTE
	Items coded PC are subject to deterioration.
	Items with these codes are not to be requested/requisitioned individually. They are part of a kit which is authorized to the maintenance category indicated in the 3d position of the SMR code. The complete kit must be requisitioned and applied.
MO-(Made at unit/ AVUM Level)	Items with these codes are not to be requested/requisitioned individually. They must be made from bulk material which is identified by the part number in the DESCRIPTION and USABLE ON CODE (UOC) column and listed in the Bulk Material group of the repair parts list in this RPSTL. If the item is authorized to you by the 3d position code of the SMR code, but the source code indicates it is made at a higher level, order the item from the higher level of maintenance.
MF-(Made at DS AVUM Level)	
MH-(Made at GS Level)	
ML-(Made at Specialized Repair Activity (SRA))	
MD-(Made at Depot)	
AO-(Assembled by unit/AVUM Level)	Items with these codes are not to be requested/requisitioned individually. The parts that make up the assembled item must be requisitioned or fabricated and assembled at the level of maintenance indicated by the source code. If the 3d position code of the SMR code authorizes you to replace the item, but the source code indicates the items are assembled at a
AF-(Assembled by DS/AVIM Level)	
AH-(Assembled by GS Category)	
AL-(Assembled by	

SRA) AD-(Assembled by Depot) XA--	higher level, order the item from the higher level of maintenance. Do not requisition an "XA" -coded item. Order its next higher assembly. (Also, refer to the NOTE below.)
XB--	If an "XB" item is not available from salvage, order it using the CAGEC and part number.
XC--	Installation drawing, diagram, instruction sheet, field service drawing, that is identified by manufacturer's part number.
XD--	Item is not stocked. Order an "XD" -coded item through normal supply channels using the CAGEC and part number given, if no NSN is available.

NOTE

Cannibalization or controlled exchange, when authorized, may be used as a source of supply for items with the above source codes, except for those source coded "XA" or those aircraft support items restricted by requirements of AR 750-1.

Maintenance Code. Maintenance codes tell you the level(s) of maintenance authorized to USE and REPAIR support items. The maintenance codes are entered in the third and fourth positions of the SMR Code as follows:

Third Position. The maintenance code entered in the third position tells you the lowest maintenance level authorized to remove, replace, and use an item. The maintenance code entered in the third position will indicate authorization to the following levels of maintenance:

<u>Maintenance Code</u>	<u>Application/Explanation</u>
C --	Crew or operator maintenance done within unit/AVUM maintenance.
O --	Unit/AVUM category can remove, replace, and use the item.
F --	Direct support/AVIM maintenance can remove, replace, and use the item.
H --	General support level can remove, replace, and use the item.
L --	Specialized repair activity can remove, replace, and use the item.
D --	Depot level can remove, replace, and use the item.

Fourth Position. The maintenance code entered in the fourth position tells whether or not the item is to be repaired and identifies the lowest maintenance level with the capability to do complete repair (i.e., perform all authorized repair functions).

NOTE

Some limited repair may be done on the item at a lower level of maintenance, if authorized by the Maintenance Allocation Chart (MAC) and SMR codes. This position will contain one of the following maintenance codes:

<u>Maintenance Code</u>	<u>Application/Explanation</u>
O --	Unit/AVUM is the lowest level that can do complete repair of the item.
F --	Direct support/AVIM is the lowest level that can do complete repair of the item.
H --	General support is the lowest level that can do complete repair of the item.
L --	Specialized repair activity (designate the specialized repair activity) is the lowest level that can do complete repair of the item.
D -	Depot is the lowest level that can do complete repair of the item.
Z --	Nonreparable. No repair is authorized.
B --	No repair is authorized. No parts or special tools are authorized for the maintenance of a "B" coded item. However, the item may be reconditioned by adjusting, lubricating, etc., at the user level.

Recoverability Code. Recoverability codes are assigned to items to indicate the disposition action on unserviceable items. The recoverability code is entered in the fifth position of the SMR Code as follows:

<u>Recoverability Codes</u>	<u>Application/Explanation</u>
Z --	Nonreparable item. When unserviceable, condemn and dispose of the item at the level of maintenance shown in the third position of SMR Code.
O --	Reparable item. When uneconomically repairable, condemn and dispose of the item at the unit level.
F --	Reparable item. When uneconomically repairable, condemn and dispose of the item at the direct support level.
H --	Reparable item. When uneconomically repairable, condemn and dispose of the item at the general support level.
D --	Reparable item. When beyond lower level repair capability, return to depot. Condemnation and disposal of item not authorized below depot level.
L --	Reparable item. Condemnation and disposal not authorized below specialized repair activity (SRA).
A --	Item requires special handling or condemnation procedures because of specific reasons (such as precious metal content, high dollar value, critical material, or hazardous material). Refer to appropriate manuals/directives for specific instructions.

NSN (Column (3)). The NSN for the item is listed in this column.

CAGEC (Column (4)). The Commercial and Government Entity Code (CAGEC) is a five-digit code which is used to identify the manufacturer, distributor, or Government agency/activity that supplies the item.

PART NUMBER (Column (5)). Indicates the primary number used by the manufacturer (individual, company, firm, corporation, or Government activity), which controls the design and characteristics of the item by means of its engineering drawings, specifications, standards, and inspection requirements to identify an item or range of items.

NOTE

When you use a NSN to requisition an item, the item you receive may have a different part number from the part ordered.

DESCRIPTION and USABLE ON CODE (UOC) (Column (6)). This column includes the following information:

1. The Federal item name and, when required, a minimum description to identify the item.
2. Part numbers for bulk materials are referenced in this column in the line item entry for the item to be manufactured or fabricated.
3. Hardness Critical Item (HCI). A support item that provides the equipment with special protection from electromagnet pulse (EMP) damage during a nuclear attack.
4. The statement "END OF FIGURE" appears just below the last item description in Column (6) for a given figure in both the repair parts list and special tools list work packages.

QTY (Column (7)). The QTY (quantity per figure) column indicates the quantity of the item used in the breakout shown on the illustration figure, which is prepared for a functional group, subfunctional group, or an assembly. A "V" appearing in this column in lieu of a quantity indicates that the quantity is variable and the quantity may vary from application to application.

EXPLANATION OF CROSS-REFERENCE INDEXES WORK PACKAGES FORMAT AND COLUMNS

1. National Stock Number (NSN) Index Work Package.

STOCK NUMBER Column. This column lists the NSN by National item identification number (NIIN) sequence. The NIIN consists of the last nine digits of the NSN.

$$\begin{array}{c} \text{NSN} \\ \hline \text{(i.e., 5305-01-574-1467).} \\ \text{NIIN} \end{array}$$

When using this column to locate an item, ignore the first 4 digits of the NSN. However, the complete NSN should be used when ordering items by stock number.

FIG. column. This column lists the number of the figure where the item is identified/located. The figures are in numerical order in the repair parts list and special tools list work packages.

ITEM column. The item number identifies the item associated with the figure listed in the adjacent FIG. column. This item is also identified by the NSN listed on the same line.

2. Part Number (P/N) Index Work Package. Part numbers in this index are listed by part number in ascending alphanumeric sequence (i.e., vertical arrangement of letter and number combination which places the first letter or digit of each group in order A through Z, followed by the numbers 0 through 9 and each following letter or digit in like order).

PART NUMBER column. Indicates the P/N assigned to the item.

FIG. column. This column lists the number of the figure where the item is identified/located in the repair parts list and special tools list work packages.

ITEM column. The item number is that number assigned to the item as it appears in the figure referenced in adjacent figure number column.

3. Reference Designator Index Work Package. Reference designators in this index are listed in ascending alphanumeric sequence (vertical arrangement of letter and number combination which places the first letter or digit of each group in order "A" through "Z", followed by the numbers "0" through "9" and each following letter or digit in like order).

REFERENCE DESIGNATOR Column. Indicates the reference designator assigned to the item.

FIG. Column lists the number of the figure where the item is identified/located in the repair parts list or special tools list work package.

ITEM column. The item number is that number assigned to the item as it appears in the figure referenced in the adjacent figure number column.

STOCK NUMBER column. This column lists the NSN for the item.

CAGEC column. The Commercial and Government Entity Code (CAGEC) is a 5-digit numeric code used to identify the manufacturer, distributor, or Government agency, etc., that supplies the item.

PART NUMBER column. Indicates the primary number used by the manufacturer (individual, firm, corporation, or Government activity), which controls the design and characteristics of the item by means of its engineering drawings, specifications standards, and inspection requirements to identify an item or range of items.

SPECIAL INFORMATION.

UOC. The UOC appears in the lower left corner of the Description Column heading. Usable on codes are shown as "UOC:....." in the Description column (justified left) on the first line applicable item description/nomenclature. Uncoded items are applicable to all models. Identification of the usable on codes used in the RPSTL are:

<u>Code</u>	<u>Used On</u>
83J	Model S9150-18K-1
83K	Model S9160-18K-3

Fabrication Instructions. Bulk materials required to manufacture items are listed in the Bulk Material Functional Group of this RPSTL. Part numbers for bulk materials are also referenced in the description column of the line entry for the item to be manufactured/fabricated. Detailed fabrication instructions for items source coded to be manufactured or fabricated are found in TM 9-4120-430-14.

Index Numbers. Items which have the word BULK in the figure column will have an index number shown in the item number column. This index number is a cross-reference between the National Stock Number/Part Number Index work package.

ASSOCIATED PUBLICATIONS. The publication listed below pertains to the Air Conditioner Unit and its components.

TM 9-4120-430-14	S9150-18K-1 Air Conditioner, Compact, Horizontal, 18,000 BTU/Hr, 230 Volt, 1 Phase, 50/60 Hz and S9160-18KH-3 Air Conditioner, Compact, Horizontal, 18,000 BTU/Hr, 208 Volt, 3 Phase, 50/60 Hz Operator's, Unit, Direct Support, and General Support Maintenance Manual
------------------	---

HOW TO LOCATE REPAIR PARTS

1. When NSNs or P/Ns Are Not Known.

First. Using the table of contents, determine the assembly group or subassembly group to which the item belongs. This is necessary since figures are prepared for assembly groups and subassembly groups, and listings are divided into the same groups.

Second. Find the figure covering the assembly group or subassembly group to which the item belongs.

Third. Identify the item on the figure and note the item number.

Fourth. Refer to the repair parts list work packages for the figure and item numbers. The NSNs and part numbers are on the same line as the associated item numbers.

2. When NSN Is Known:

First. If you have the NSN, look in the STOCK NUMBER column of the NSN index work package. The NSN is arranged in NIIN sequence. Note the figure and item number next to the NSN.

Second. Turn to the figure and locate the item number. Verify that the item is the one you are looking for.

3. When P/N Is Known.

First. If you have the P/N and not the NSN, look in the PART NUMBER column of the P/N index work package. Identify the figure and item number.

Second. Look up the item on the figure in the applicable repair parts list work package.

4. When Reference Designator Is Known.

First. If you know the reference designator, look in the REFERENCE DESIGNATOR column of the reference designator index work package. Note the figure and item number.

Second. Turn to the figure and locate the item number. Verify that the item is the one you are looking for.

ABBREVIATIONS

Abbreviation

Explanation

END OF WORK PACKAGE

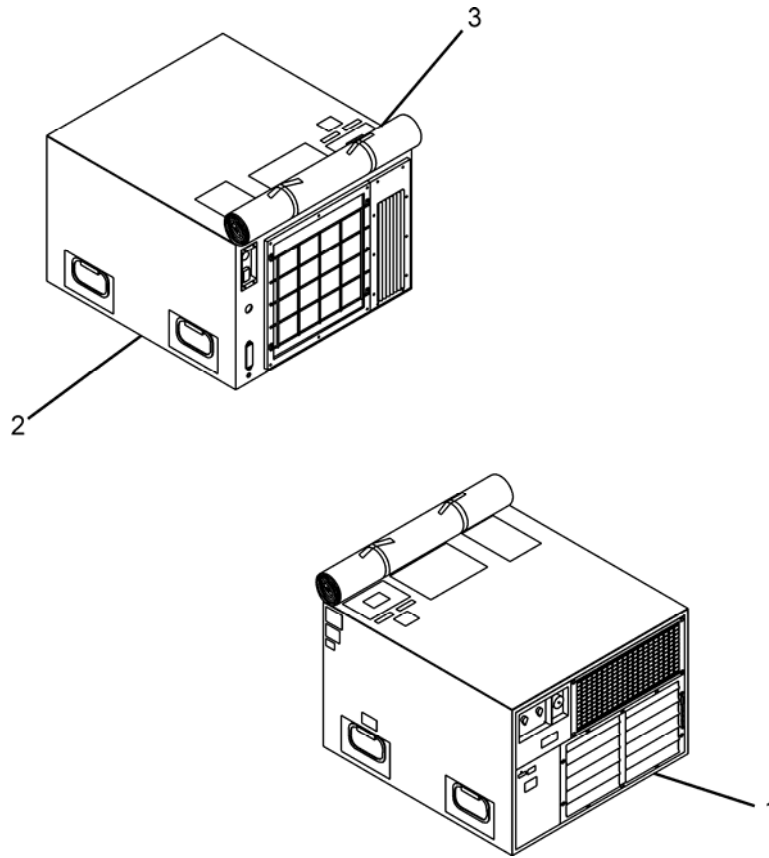


Figure 1. Air Conditioner

(1) ITEM NO.	(2) SMR CODE	(3) NSN	(4) CAGEC	(5) PART NUMBER	(6) DESCRIPTION AND USABLE ON CODE (UOC)	(7) QTY
					GROUP 00 AIR CONDITIONER	
					FIG. 1 AIR CONDITIONER	
1	PBFHH	4120-01-523-4472	0V5R4	S9160-18KH-3	AIR CONDITIONER, HORIZONTAL, COMPACT, 18K, 208V, 3 PH, 50/60 HZ UOC: 83K	1
2	PBFHH	4120-01-523-4131	0V5R4	S9150-18KH-1	AIR CONDITIONER, HORIZONTAL, COMPACT, 18K, 230V, 1 PH, 50/60 HZ UOC: 83J	1
3	XBOZZ		0V5R4	S9160-6250	. COVER ASSEMBLY, CANVAS	1
END OF FIGURE						

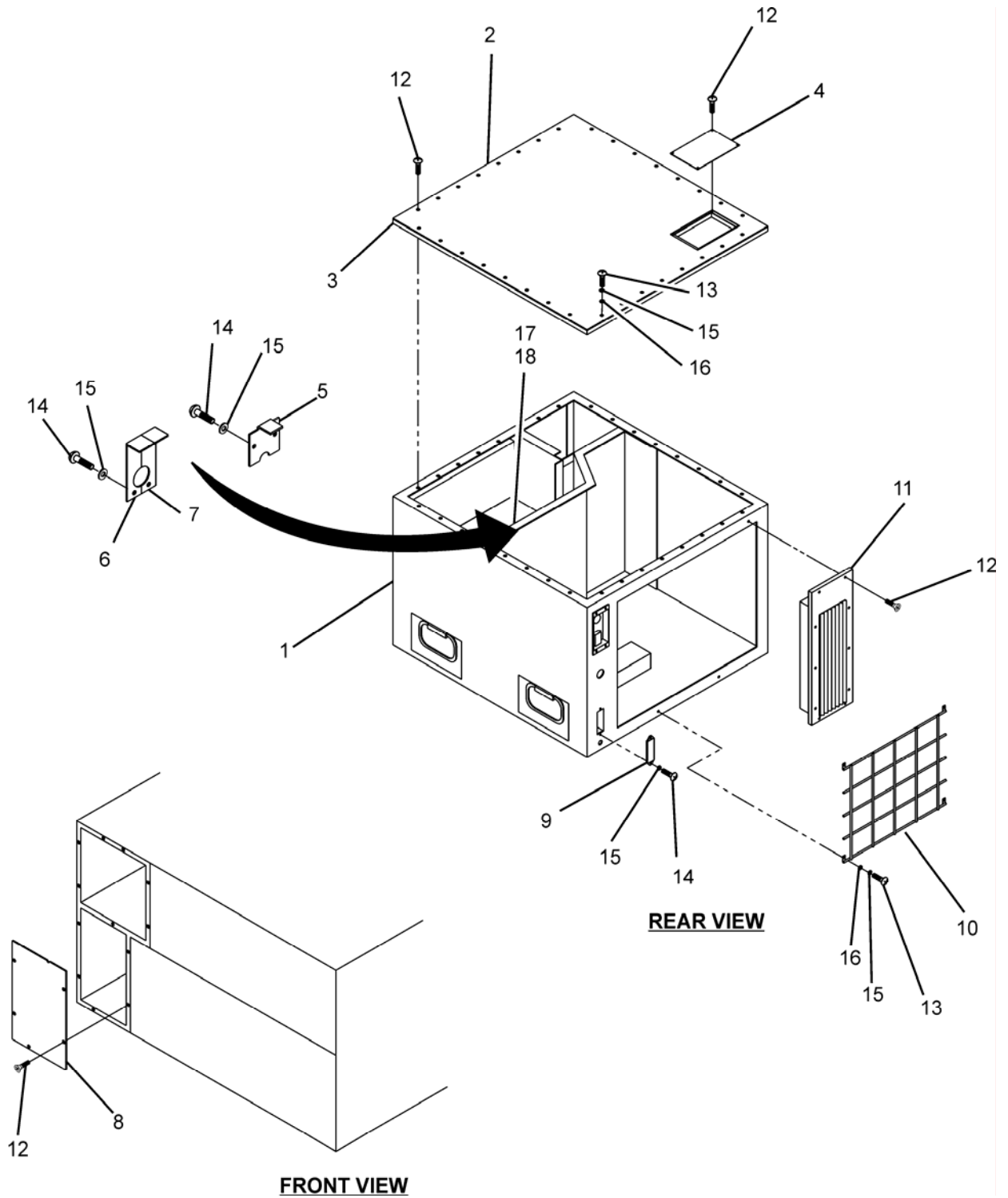


Figure 2. Housing, Covers, Grills, and Screens

(1) ITEM NO.	(2) SMR CODE	(3) NSN	(4) CAGEC	(5) PART NUMBER	(6) DESCRIPTION AND USABLE ON CODE (UOC)	(7) QTY
					GROUP 01 AND 0101 HOUSING, COVERS, PANELS, AND, SCREENS	
					FIG. 2 HOUSING, COVERS, PANELS, GRILLS, AND SCREENS	
1	XBOZZ		0V5R4	S9160-6701	. HOUSING ASSEMBLY	1
2	XBOZZ		0V5R4	S9160-9941-1	. COVER, TOP.....	1
3	MFOZZ		0V5R4	S9160-3-4	. INSULATION, P/N ASTM-C- 534TP2, 0.25 THK	1
4	XBOZZ		0V5R4	S9500-E9941-2	. COVER, ACCESS.....	1
5	XBOZZ		0V5R4	S9160-9976-1	. CLOSURE PLATE, TOP	1
6	XBOZZ		0V5R4	S9160-9947	. PLATE, CLOSURE, LEFT.....	1
7	XBOZZ		0V5R4	S9160-9948	. PLATE, CLOSURE, RIGHT....	1
8	XBOZZ		0V5R4	S9160-9944	. PLATE, LOWER HOUSING.....	1
9	XBOZZ		0V5R4	S9160-9949	. GUARD, VENTILATION.....	1
10	XBOZZ		0V5R4	S9160-9955	. GUARD, CONDENSER.....	1
11	XBOOO		0V5R4	S9160-8886-1	. LOUVER, CONDENSER AIR..... DISCHARGE (Note: For parts see figure 3)	1
12	PAOZZ	5305-00-958-6373	80205	MS24693-S51	. SCREW, MACHINE.....	52
13	PAOZZ	5305-00-984-6195	80205	MS35206-247	. SCREW, MACHINE CAD PLTD,.... NO. 8, 0.75 IN	9
14	PAOZZ	5305-00-984-6194	80205	MS35206-246	. .SCREW, MACHINE.....	8
15	PAOZZ	5310-00-045-3299	80205	MS35338-42	. WASHER, LOCK CAD PLTD.....	17
16	PAOZZ	5310-00-821-2366	97403	13214E3469	. WASHER, FLAT.....	9
17	XBOZZ		0V5R4	S9160-9943	. HEAT SHIELD.....	1
18	PBOZZ	5320-00-119-6754	96906	MS20470AD2- 3	. RIVET, SOLID.....	4

END OF FIGURE

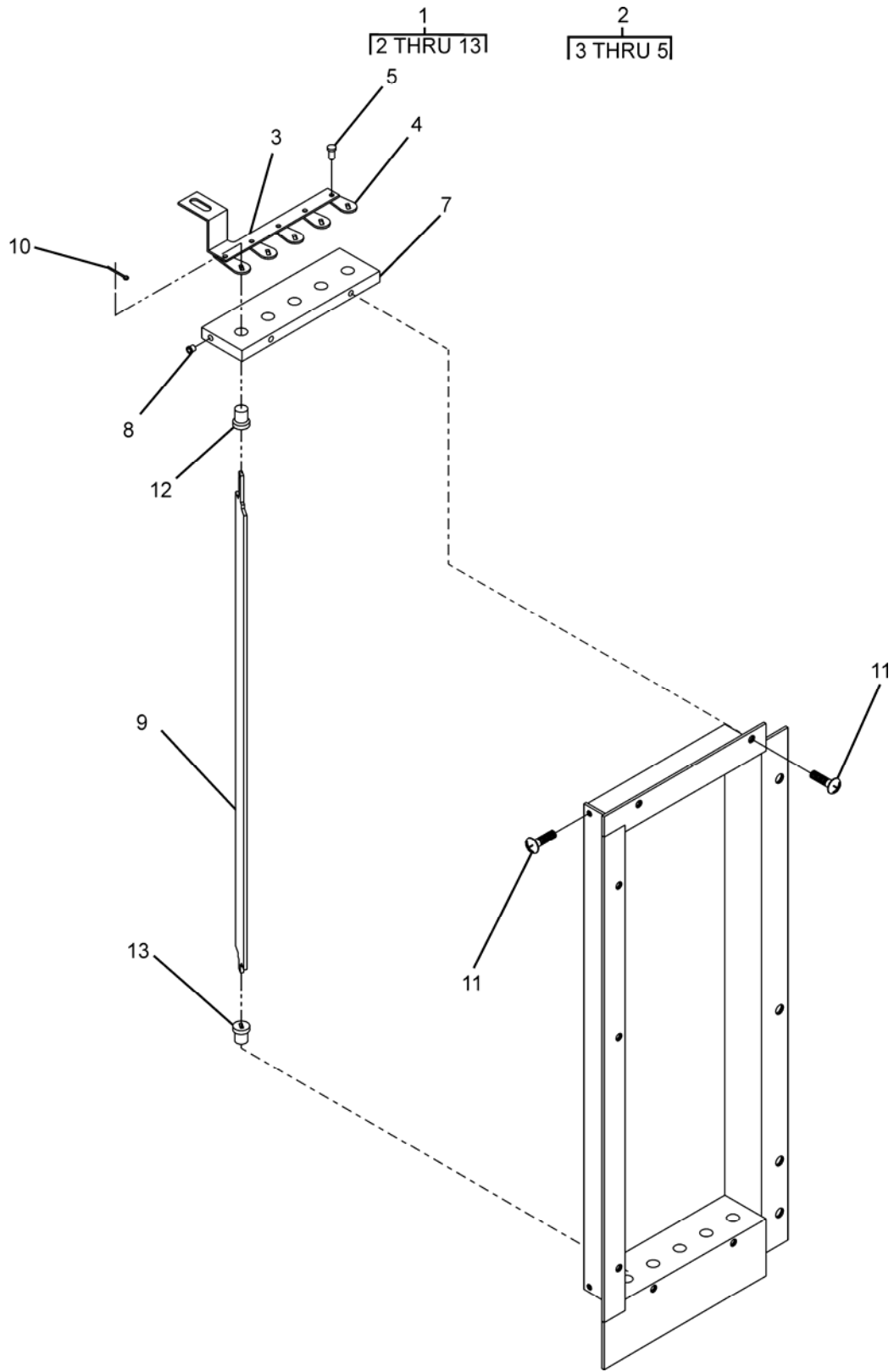


Figure 3. Louver, Condenser Air Discharge

(1) ITEM NO.	(2) SMR CODE	(3) NSN	(4) CAGEC	(5) PART NUMBER	(6) DESCRIPTION AND USABLE ON CODE (UOC)	(7) QTY
GROUP 0103 LOUVERS						
FIG. 3 LOUVER, CONDENSER AIR DISCHARGE						
1	XBOHH		0V5R4	S9160-8886-1	LOUVER, CONDENSER AIR..... DISCHARGE	RF
2	XBOZZ		0V5R4	S9160-9956-1	. LOUVER BRACKET ASSEMBLY	1
3	XBOZZ		0V5R4	S9160-9952	. . CONNECTOR LINK.....	1
4	XBOZZ		0V5R4	S9160-9956-13	. . BRACKET, ANGLE.....	5
5	PAOZZ	5320-00-879-6606	96906	MS16535-154	. . RIVET, TUBULAR	5
6	XBOZZ		0V5R4	S9160-9956-3	. FRAME ASSEMBLY, LOUVER.....	1
7	XBOZZ		0V5R4	S9160-9956-4	. FRAME, END.....	1
8	PAOZZ	5325-00-142-9959	0V5R4	3585-2CN-0246	. INSERT, SCREW THREAD	4
9	XBOZZ		0V5R4	S9160-9956-7	. BLADE, LOUVER	5
10	PAOZZ	5315-00-815-1405	80205	MS24665-151	. PIN, COTTER	5
11	PAOZZ	5305-00-959-6647	96906	MS24693-S46	. SCREW, MACHINE.....	4
12	PAOZZ	3110-01-028-6817	97403	13216E6103-1	. BEARING, LOUVER BLADE..... UPPER	5
13	PAOZZ	3110-01-028-6816	97403	13216E6103-2	. BEARING, LOUVER BLADE..... LOWER	5

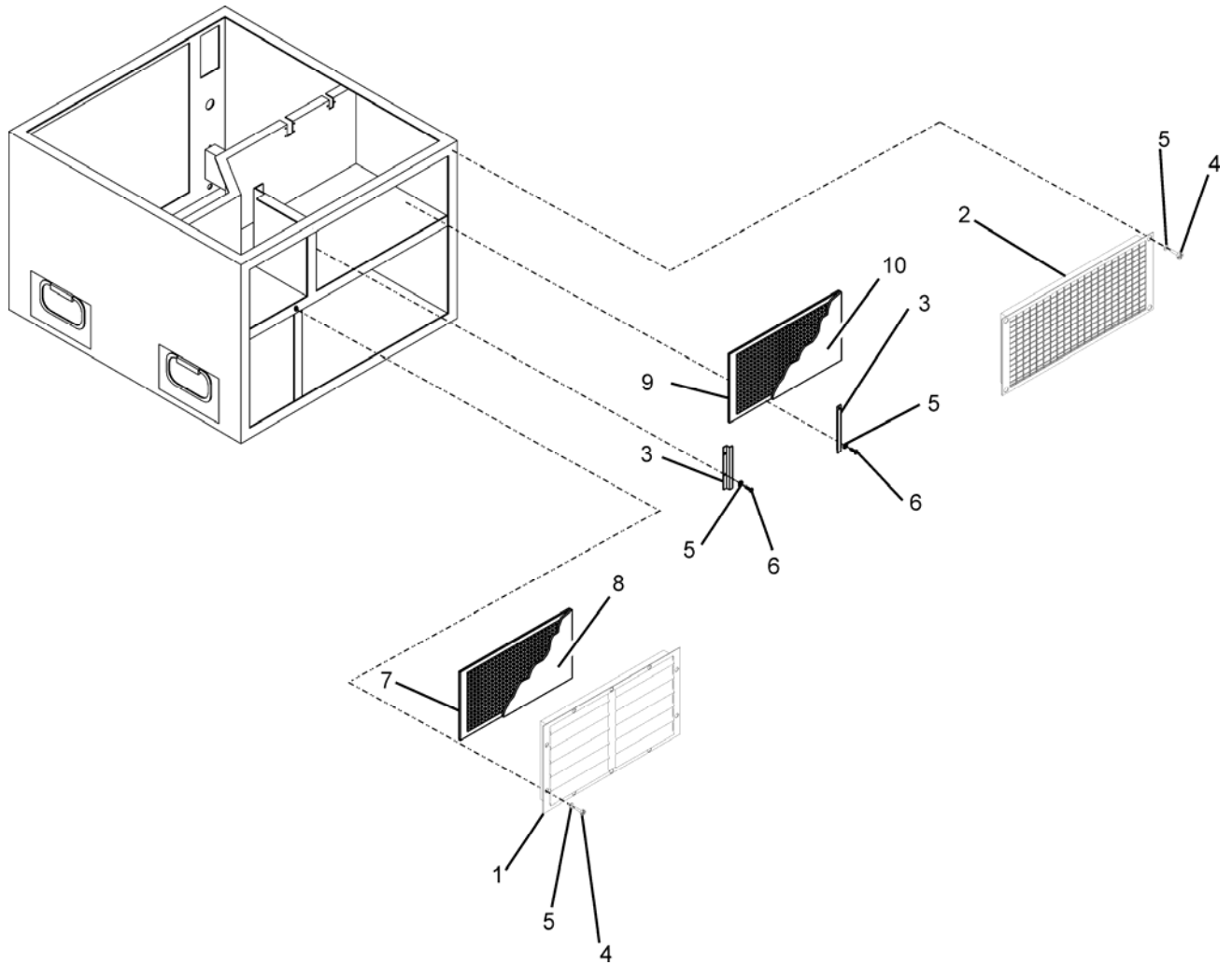


Figure 4. Louvers, Air Intake Filter, and Mist Eliminator

(1) ITEM NO.	(2) SMR CODE	(3) NSN	(4) CAGEC	(5) PART NUMBER	(6) DESCRIPTION AND USABLE ON CODE (UOC)	(7) QTY
					GROUP 0103 AND 0201 LOUVERS AND AIR INTAKE FILTER	
					FIG. 4 LOUVERS, AIR INTAKE FILTER, AND MIST ELIMINATOR	
1	XBOZZ		0V5R4	S9160-6079-1	. LOUVER W/CLIPS, EVAPORATOR AIR INTAKE	1
2	XBOZZ		97403	13216E6078-1	. LOUVER, METAL, EVAPORATOR AIR DISCHARGE	1
3	XBOZZ		0V5R4	S9160-9933	. BRACKET, MIST ELIMINATOR	2
4	PAOZZ	5305-00-984-6197	80205	MS35206-249	. SCREW, MACHINE	16
5	PAOZZ	5310-00-045-3299	80205	MS35338-42	. WASHER, LOCK	20
6	PAOZZ	5305-00-948-6194	80205	MS35206-246	. SCREW, MACHINE	4
7	PAOZZ		0V5R4	S9160-6081-1	. FILTER, AIR INTAKE.....	1
8	PAOZZ	4130-01-541-9457	0V5R4	S9160-6081-2	. FILTER MEDIA	1
9	PAOZZ	4130-01-541-9500	0V5R4	S9160-1-1147	. FILTER, MIST ELIMINATOR.....	1
10	PAOZZ	4130-01-541-9470	0V5R4	S9160-1-1147-1	. FILTER MEDIA	1
END OF FIGURE						

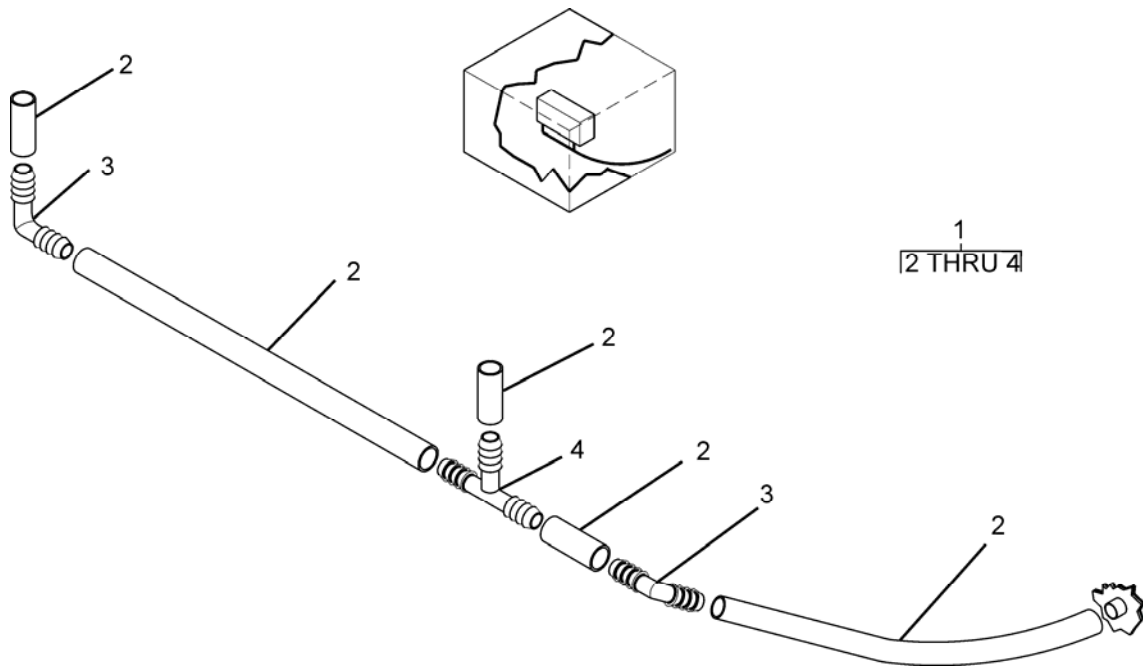


Figure 5. Condensate Drain Tube Assembly

(1) ITEM NO.	(2) SMR CODE	(3) NSN	(4) CAGEC	(5) PART NUMBER	(6) DESCRIPTION AND USABLE ON CODE (UOC)	(7) QTY
					GROUP 0104 CONDENSATE DRAIN TUBE ASSEMBLY	
					FIG. 5 CONDENSATE DRAIN TUBE ASSEMBLY	
1	XBOZZ		0V5R4	S9160-TCD	. TUBE ASSEMBLY.....	1
					CONDENSATE DRAIN	
2	MOOZZ		81349	ZZ-T-831	. . TUBE, DRAIN, 0.500 I.D. X.....	AR
					0.750 O.D., CLEAR, MADE FROM TUBE, P/N ZZ-T-831, TYPE VIII, CLASS 8, CUT TO LENGTH	
3	XB0ZZ		87373	P8EUBB	. . ELBOW, PIPE.....	2
4	XB0ZZ	4730-01-327-8615	61424	P8TUBB	. . TEE, PIPE.....	1
END OF FIGURE						

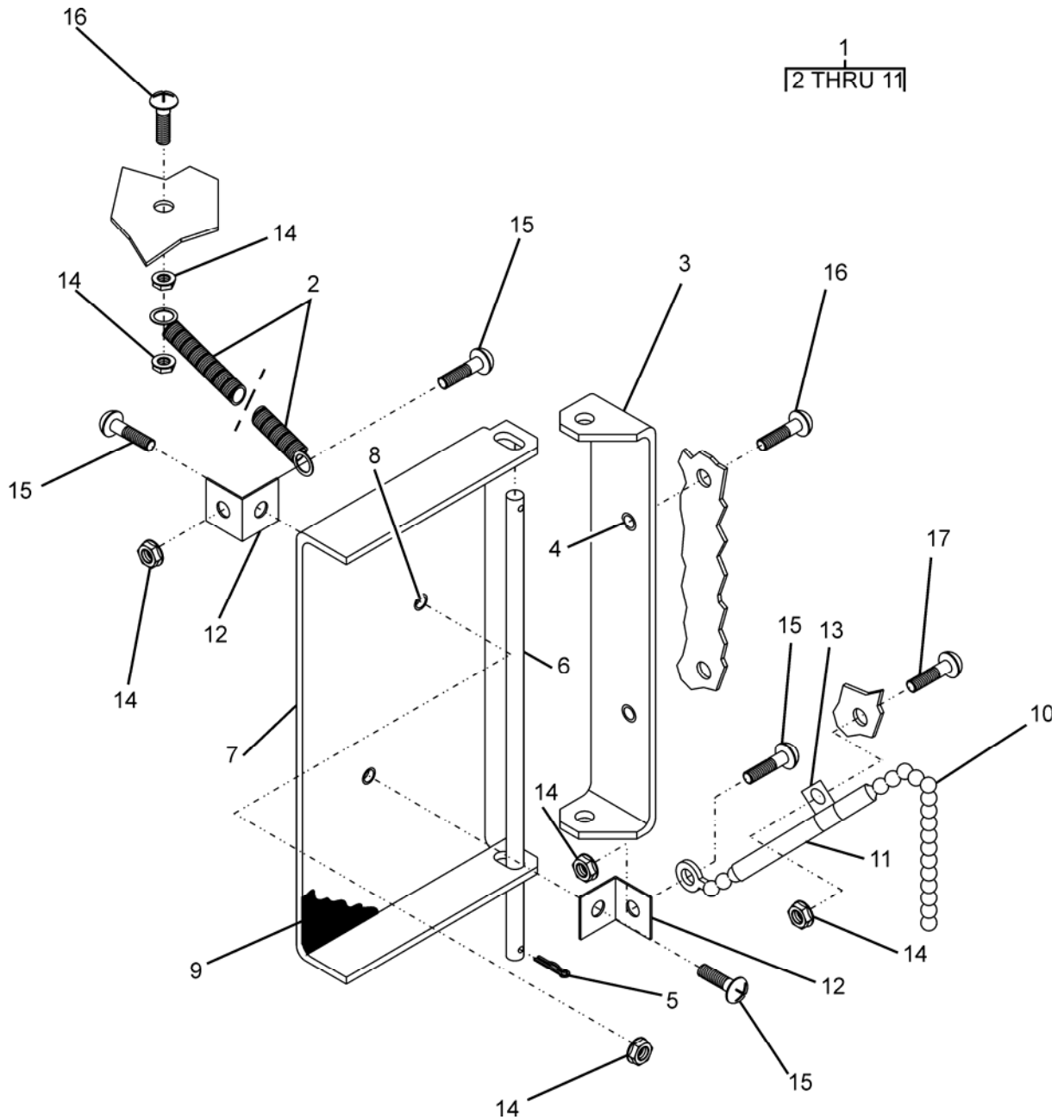


Figure 6. Fresh Air Damper Assembly

(1) ITEM NO.	(2) SMR CODE	(3) NSN	(4) CAGEC	(5) PART NUMBER	(6) DESCRIPTION AND USABLE ON CODE (UOC)	(7) QTY
					GROUP 0202 FRESH AIR DAMPER ASSEMBLY	
					FIG. 6 FRESH AIR DAMPER ASSEMBLY	
1	XBOOO		0V5R4	S9160-6094-1	. DAMPER ASSEMBLY, FRESH AIR	1
2	PAOZZ		0V5R4	S9600-6327	.. SPRING.....	1
3	XBOZZ		0V5R4	S9500-E9968	.. BRACKET, DAMPER	1
4	PAOZZ	5310-01-249-3084	96906	MS27130-S26K	... NUT, PLAIN, BLIND, RIVET	2
5	PAOZZ	5315-00-839-2325	80205	MS24665-132	.. PIN, COTTER.....	2
6	XBOZZ		0V5R4	S9500-E9970	.. SHAFT, DAMPER	1
7	XBOZZ		0V5R4	S9160-9969	.. DOOR, DAMPER,	1
8	PAOZZ	5310-01-249-3084	96906	MS27130-S26K	... NUT, PLAIN, BLIND, RIVET	1
9	MFOZZ		0V5R4	S9160-13-22	.. INSULATION, THERMAL..... MADE FROM INSULATION, P/N ASTM-C534TP2, 0.500 THK	1
10	XBOZZ		0V5R4	S9600-CH	.. CHAIN	1
11	XBOZZ		0V5R4	S9500-T	.. TUBING.....	1
12	XBOZZ		0V5R4	S9500-9968	. BRACKET.....	2
13	PAOZZ	5340-00-598-0146	81343	AS21919WDG6	. CLAMP, LOOP	1
14	PAOZZ	5310-00-811-3494	80205	MS21044N08	. NUT, SELF-LOCKING, HELICAL....	6
15	PAOZZ	5305-00-948-6194	80205	MS35206-246	. SCREW, MACHINE	4
16	PAOZZ	5305-00-958-0671	96906	MS35207-274	. SCREW, MACHINE	3
17	PAOZZ	5305-00-957-7821	96906	MS24693-S54	. SCREW, MACHINE	2
END OF FIGURE						

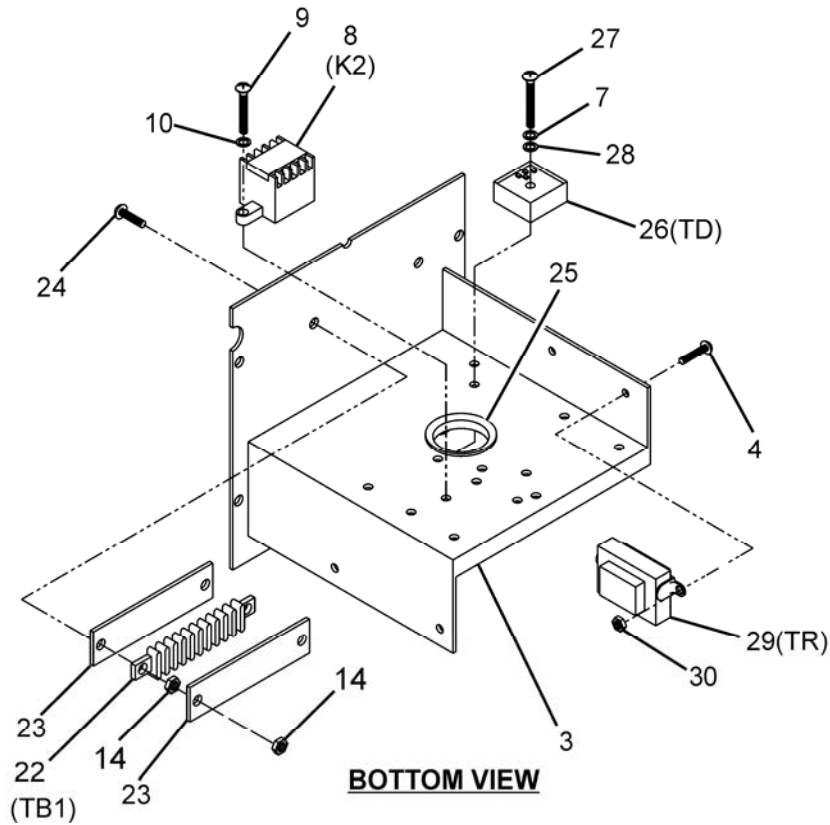
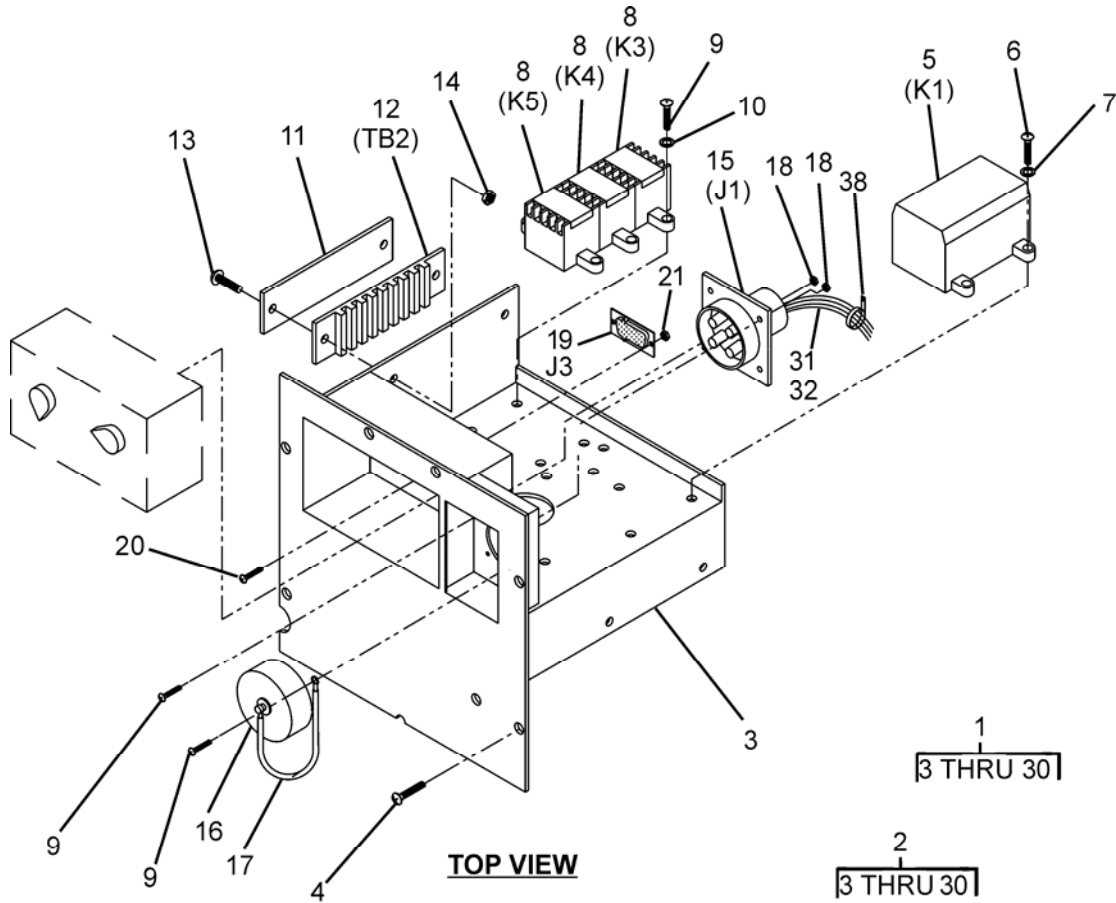


Figure 7. Junction Box and Electrical Components (Sheet 1 of 2)

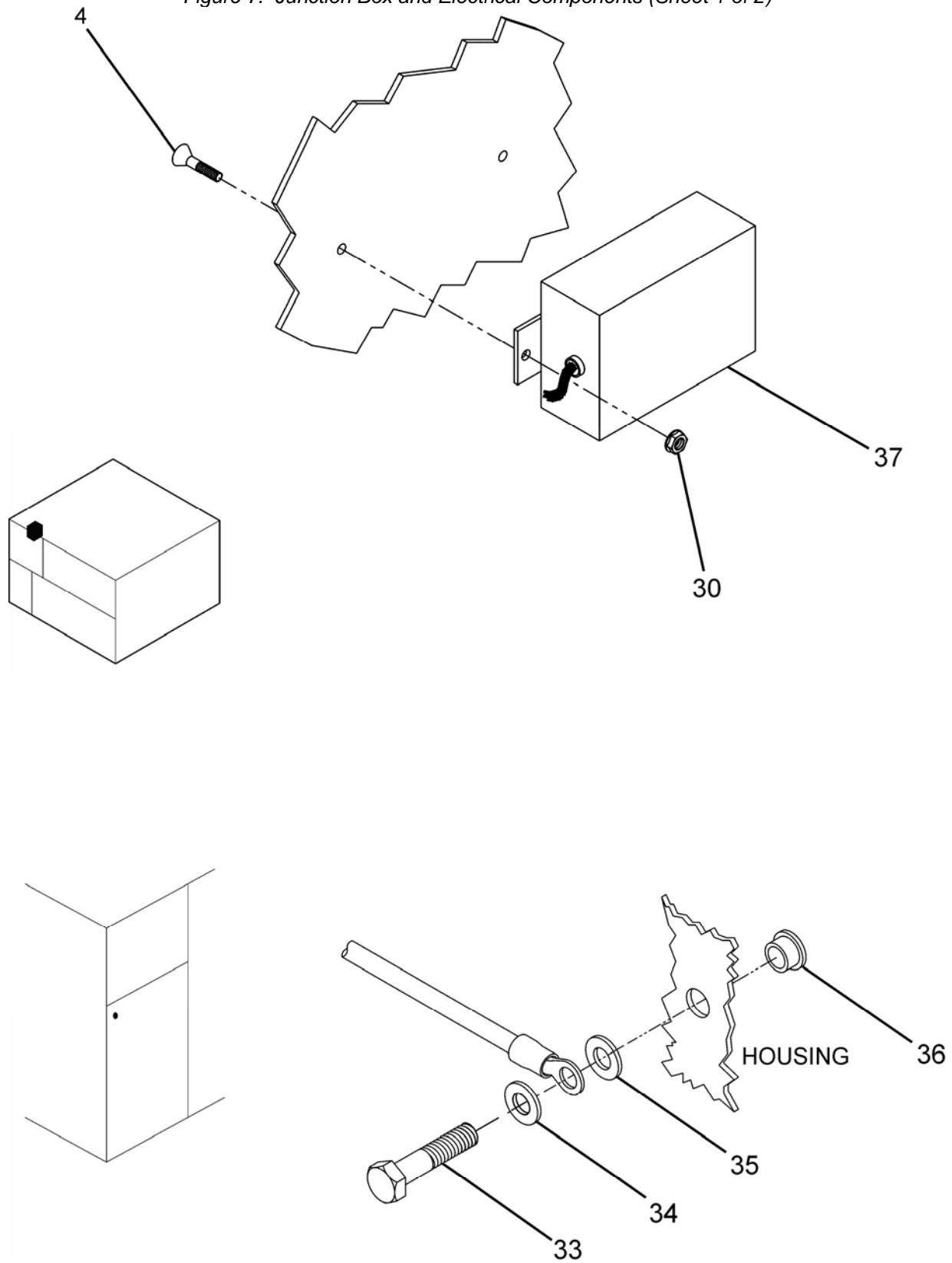


Figure 7. Junction Box and Electrical Components (Sheet 2 of 2)

(1) ITEM NO.	(2) SMR CODE	(3) NSN	(4) CAGEC	(5) PART NUMBER	(6) DESCRIPTION AND USABLE ON CODE (UOC)	(7) QTY
GROUP 03 ELECTRICAL COMPONENTS						
FIG. 7 JUNCTION BOX AND ELECTRICAL COMPONENTS						
1	PAOOO		0V5R4	S9150-JBA-1	. JUNCTION BOX ASSEMBLY UOC: 83J	1
2	PAOOO		0V5R4	S9160-JBA-3	. JUNCTION BOX ASSEMBLY UOC: 83K	1
3	XBOZZ		0V5R4	S9160-9923	.. JUNCTION BOX.....	1
4	PAOZZ	5305-00-958-6373	80205	MS24693-S51	.. SCREW, MACHINE.....	12
5	PAOZZ		0V5R4	HCC-3XQ02CY	.. RELAY, K1	1
6	PAOZZ	5305-00-984-6194	80205	MS35206-246	.. SCREW, MACHINE.....	4
7	PAOZZ	5310-00-045-3299	80205	MS35338-42	.. WASHER, LOCK.....	5
8	PAOZZ		0V5R4	HCR51ZQ1AB	.. RELAY, K2, K3, K4, K5	4
9	PAOZZ	5305-00-984-4992	80205	MS35206-232	.. SCREW, MACHINE.....	12
10	PAOZZ	5310-00-543-2410	80205	MS35338-40	.. WASHER, LOCK.....	8
11	XBOZZ	9905-01-648-0495	97403	13216E6221-1	.. MARKER STRIP.....	1
12	PAOZZ	5940-01-201-7221	26405	899JJ12K48,53	.. TERMINAL BOARD, TB2.....	1
13	PAOZZ		80205	MS24693-S248	.. SCREW, MACHINE.....	2
14	PAOZZ	5310-00-811-3494	80205	MS21044N08	.. NUT, LOCK	6
15	PAOZZ	5935-01-509-1003	0V5R4	75-190024-79P	.. CONNECTOR, RECEPTACLE, ELECTRICAL, J1	1
16	PAOZZ	5935-01-176-1708	96906	MS25043-22DA	.. COVER, ELECTRICAL	1
17	MFOZZ	5970-00-814-2878	81343	M23053/5-106-9	.. INSULATION SLEEVING	1
					MADE FROM P/N M23053/5-106-9 (81349) 4.5 INCHES LONG	
18	PAOZZ	5310-00-081-8087	80205	MS21044N06	.. NUT, SELF-LOCKING.....	4
19	PAOZZ	5935-00-490-3743	81349	M24308-4-2	.. CONNECTOR, RECEPTACLE, J3	1
20	PAOZZ	5305-00-954-4743	96906	MS24693-S5	.. SCREW, MACHINE.....	2
21	PAOZZ	5310-00-754-4406	39428	91841A005	.. NUT, LOCK	2
22	PAOZZ	5940-01-542-3101	26405	600GP-6	.. TERMINAL BOARD, TB1	1
23	XBOZZ		26405	606GP-MS6	.. MARKER STRIP.....	2
24	PAOZZ	5305-00-051-2353	96906	MS24693-S55	.. SCREW, MACHINE.....	2
25	PAOZZ	5325-00-185-0012	96906	MS35489-35	.. GROMMET, NONMETALLIC	1
26	PAOZZ	5945-01-503-6233	52516	HMPS24A9X60	.. RELAY, THERMAL, TD.....	1
27	PAOZZ	5305-00-984-6199	80205	MS24693-251	.. SCREW, MACHINE.....	1
28	PAOZZ	5310-00-821-2346	97403	13214E3469	.. WASHER, FLAT	1
29	PAOZZ		0V5R4	HCT-09E0BB06	.. TRANSFORMER, TR.....	1
30	PAOZZ	5310-00-811-3494	80205	MS21044N08	.. NUT, SELF-LOCKING, HELICAL..	2
31	XBOZZ		0V5R4	S9150-18KWH-1	. WIRING HARNESS.....	1

(1) ITEM NO.	(2) SMR CODE	(3) NSN	(4) CAGEC	(5) PART NUMBER	(6) DESCRIPTION AND USABLE ON CODE (UOC)	(7) QTY
33	PAOZZ	5305-00-068-0516	80204	B1821BH025F113	UOC: 83K . SCREW, CAP, HEXAGON	1
34	PAOZZ	5310-00-596-9441	96906	MS35335-33	. WASHER, LOCK.....	1
35	PAOZZ	5310-00-809-4058	96906	MS27183-10	. WASHER, FLAT	1
36	PAOZZ	5310-00-958-5321	80205	NAS1329- S4EK140	. NUT, RIVET, FLAT HEAD	1
37	PAOZZ	5930-01-537-1622	0V5R4	S9500-6670	. THERMOSTAT, ELECTRONIC	1
38	PAOZZ	5340-00-286-9424	81343	AS21919WDG-14	BOX . CLAMP, LOOP	3
END OF FIGURE						

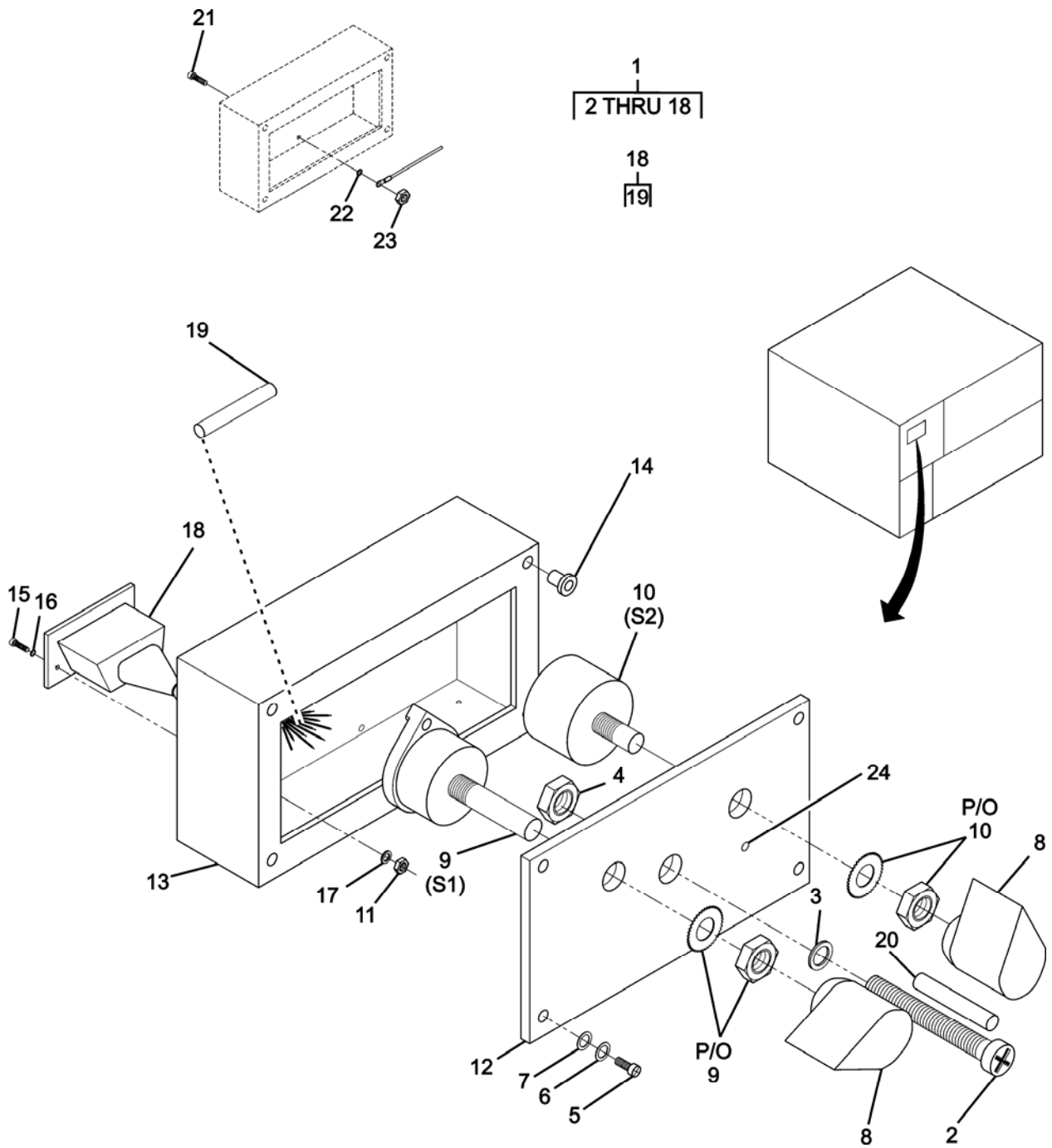


Figure 8. Remote Control Module

(1) ITEM NO.	(2) SMR CODE	(3) NSN	(4) CAGEC	(5) PART NUMBER	(6) DESCRIPTION AND USABLE ON CODE (UOC)	(7) QTY
					GROUP 0301 REMOTE CONTROL MODULE FIG. 8 REMOTE CONTROL MODULE	
1	PAOOO	4520-01-542-2078	0V5R4	S9160-9156-1	. REMOTE CONTROL MODULE	1
2	PAOZZ	5305-00-958-6381	96906	MS35206-208	.. SCREW, MACHINE	1
3	PAOZZ	5310-00-809-4058	96906	MS27183-10	.. WASHER, FLAT.....	1
4	PAOZZ	5310-00-088-1251	81349	M45913/1- 4CG5C	.. NUT, SELF-LOCKING, HE	1
5	PAOZZ	5305-00-889-2997	80205	MS35206-215	.. SCREW, MACHINE	4
6	PAOZZ	5310-00-543-2410	80205	MS35338-40	.. WASHER, LOCK.....	4
7	PAOZZ	5310-00-950-1310	80205	MS27183-4	.. WASHER, FLAT.....	4
8	PAOZZ	5355-00-556-0145	96906	MS91528-1K2B	.. KNOB CONTROL, PLASTIC	2
9	PAOZZ	5930-01-466-6331	0V5R4	C4D0304N- 9833	.. SWITCH, ROTARY 1.00 IN.	1
10	PAOZZ		52516	AH4101	.. RESISTOR, VARIABLE,	1
11	PAOZZ	5310-00-934-9738	80205	MS35649-222	.. NUT, PLAIN, HEXAGON	2
12	XBOZZ		0V5R4	S9160-9979	.. PANEL, CONTROL.....	1
13	XBOZZ		0V5R4	S9500-E9924	.. BOX, CONTROL	1
14	PAOZZ	5310-01-044-2274	81349	M45938/1-53	... NUT, PLAIN, CLINCH	4
15	PAOZZ	5305-00-988-1167	80205	MS35206-204	.. SCREW, MACHINE	2
16	PAOZZ	5310-00-087-0057	96906	MS27183-2	.. WASHER, FLAT.....	2
17	PAOZZ	5310-00-543-5060	80205	MS35338-39	.. WASHER, LOCK.....	2
18	XBOZZ		0V5R4	S9500-4274	.. WIRING HARNESS.....	1
19	MFOZZ		0V5R4	S9500-4190/16	... INSULATION SLEEVING,.....	1
20	MFOZZ	5970-00-814-2878	81343	M23053/5-106- 9	.. INSULATION SLEEVING MAKE . FROM P/N M23053/5-106-9 (81349), 2 INCHES	1
21	PAOZZ	5305-00-958-5474	80205	MS35190-250	. SCREW, MACHINE	1
22	PAOZZ	5310-00-811-3494	96906	MS34338-50	. WASHER, LOCK.....	1
23	PAOZZ	5310-00-877-5795	80205	MS21044N8	. NUT, SELF-LOCKING, HE	1
24	PAOZZ	5980-01-542-0011	0WHG2	PM151D5- 24V/13	. DIODE, LIGHT EMITTING, LP..... PM151D5-24V/13 (STARLED, IND) S9160-LED-G (0V5R4)	1

END OF FIGURE

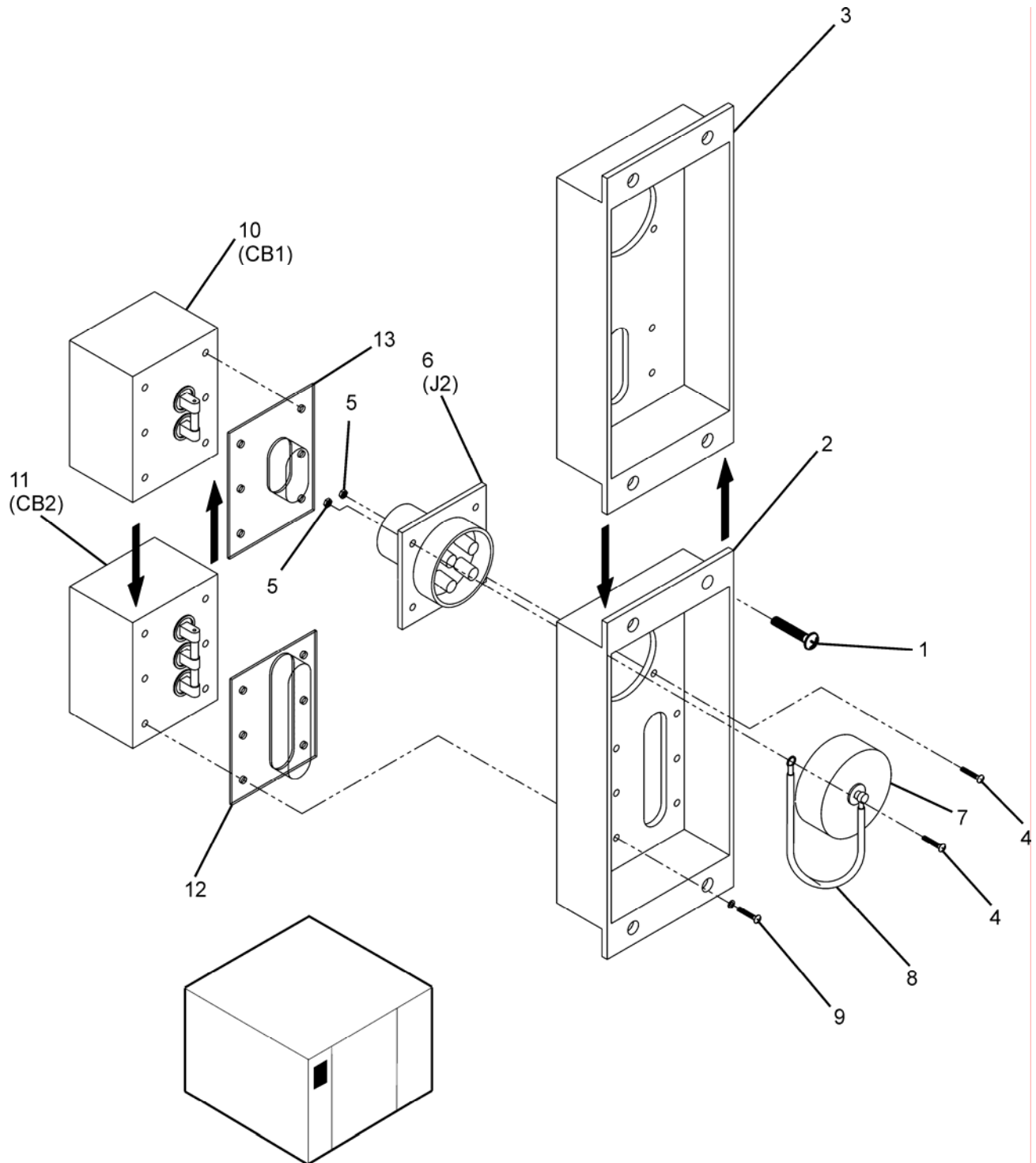


Figure 9. Circuit Breaker Assembly

(1) ITEM NO.	(2) SMR CODE	(3) NSN	(4) CAGEC	(5) PART NUMBER	(6) DESCRIPTION AND USABLE ON CODE (UOC)	(7) QTY
GROUP 03 ELECTRICAL COMPONENTS						
FIG. 9 CIRCUIT BREAKER ASSEMBLY						
1	PAOZZ		96906	MS24693-S51	. SCREW, MACHINE	4
2	XBOZZ		0V5R4	S9160-9932	. BRACKET, MOUNTING (FOR..... S9160-18KH-3 UNIT) UOC: 83K	1
3	XBOZZ		0V5R4	S9150-9932	. BRACKET, MOUNTING (FOR S9150-18KH-1 UNIT) UOC: 83J	1
4	PAOZZ		96906	MS35206-232	. SCREW, MACHINE	4
5	PAOZZ	5310-00-857-4957	80205	MS21044D6	. NUT, SELF-LOCKING, HELICAL ..	4
6	PAOZZ	5935-01-509-1003	0V5R4	75-190024-79P	. CONNECTOR, RECEPTACLE,..... ELECTRICAL, J2	1
7	PAOZZ	5935-01-176-1708	96906	MS25043-22DA	. COVER, ELECTRICAL	1
8	MFOZZ	5970-00-814-2878	81343	M23053/5-106-9	. INSULATION SLEEVING MADE.. FROM P/N M23053/5-106-9 (81349) 4.5 INCHES LONG	1
9	PAOZZ	5305-00-984-4984	80205	MS35206-227	. SCREW, MACHINE	3
10	PAOZZ		73559	RR2-B0-24-630-181-C	. CIRCUIT BREAKER, CB1 (FOR .. S9150-18KH-1 UNIT) UOC: 81J	1
11	PAOZZ		73559	RR3-B0-24-625-181-C	. CIRCUIT BREAKER, CB2 (FOR ... S9160-18KH-3 UNIT) UOC: 81K	1
12	XBOZZ		97539	C1113/42	. COVER, NON-METALLIC	1
13	XBOZZ		97539	C1113/43	. COVER, NON-METALLIC	1
END OF FIGURE						

(1) ITEM NO.	(2) SMR CODE	(3) NSN	(4) CAGEC	(5) PART NUMBER	(6) DESCRIPTION AND USABLE ON CODE (UOC)	(7) QTY
					GROUP 0401 EVAPORATOR FAN ASSEMBLY	
					FIG. 10 EVAPORATOR FAN ASSEMBLY	
1	PAOZZ	5305-00-984-6194	80205	MS35206-246	. SCREW, MACHINE	8
2	PAOZZ	5310-00-045-3299	80205	MS35338-42	. WASHER, LOCK.....	8
3	XBOZZ		0V5R4	S9160-9931	. BRACKET, CLOSE OFF	1
4	XBOOO		0V5R4	S9160-EFA-1	. EVAPORATOR FAN ASSEMBLY	1
5	XBOZZ		39428	94613A542	. . CAPSCREW, YEL/ZN,CAD,	4
					1/4-28 X 3/4	
6	PAOZZ	5310-00-582-5965	80205	MS35338-44	. . WASHER, LOCK, 1/4.....	4
7	XBOZZ		0V5R4	S9160-9930	. . BRACKET.....	1
8	PAOZZ	5310-01-335-4894	80205	MS21075-L4N	. . . NUT, SELF-LOCKING.....	4
9	PAOZZ	5320-00-117-6938	96906	MS20426AD3-4	. . . RIVET, SOLID	8
10	PAOZZ	5305-00-993-1848	80205	MS35207-265	. . SCREW, MACHINE	2
11	PAOZZ	5310-00-045-3296	80205	MS35338-43	. . WASHER, LOCK.....	2
12	XBOZZ		0V5R4	S9160-9929	. . BRACKET, ANGLE,	2
					..EVAPORATOR BLOWER	
13	PAOZZ	5310-00-537-3881	80205	NAS1330H3K116	. . . NUT, SELF-LOCKING.....	8
				L		
14	XBOZZ		0V5R4	S9160-9927	. . RAIL, EVAPORATOR	1
					BLOWER ASSEMBLY (RIGHT HAND)	
15	PAOZZ	5320-00-117-6938	96906	MS20426AD3-4	. . RIVET, SOLID	4
16	XBOZZ		0V5R4	S9160-9928	. . RAIL, EVAPORATOR	1
					BLOWER (LEFT HAND)	
17	PAOZZ	5305-00-067-9849	96906	MS24693-S118	. . CAPSCREW, YEL/ZN,CAD,	4
18	PAOZZ	5310-00-081-4219	96906	MS27183-12	. . WASHER, FLAT.....	8
19	PAOZZ	5310-00-088-0553	80205	MS21044N5	. . NUT, SELF-LOCKING,.....	4
					HEXAGON	
20	PAOZZ	6105-01-541-9888	0V5R4	9160-6140	. . MOTOR, AC W/ CAPACITOR.....	1
21	PBOZZ	4140-01-541-9421	0V5R4	S9160-TLR-135	. . IMPELLER, FAN,	1
					CENTRIFUGAL	
22	PAOZZ	5305-00-724-5812	96906	MS51964-65	. . . SETSCREW	1
23	XBOZZ		0V5R4	S9160-9939	. . HOUSING, FAN,	1
					CENTRIFUGAL	
24	XBOZZ		0V5R4	S9160-6360	. . RING, EVAPORATOR	2
					HOUSING	
25	PAOZZ	5320-01-295-9924	07707	AD-42H	. . RIVET.....	4
26	PAOZZ	5305-00-052-2246	96906	MS24693-S299	. SCREW, MACHINE	4
27	PAOZZ	5310-00-877-5795	96906	MS21044N08	. NUT, SELF-LOCKING, HELICAL...	6
28	PAOZZ	5340-00-291-5322	81343	AS21919WDG3	. CLAMP, LOOP	1
END OF FIGURE						

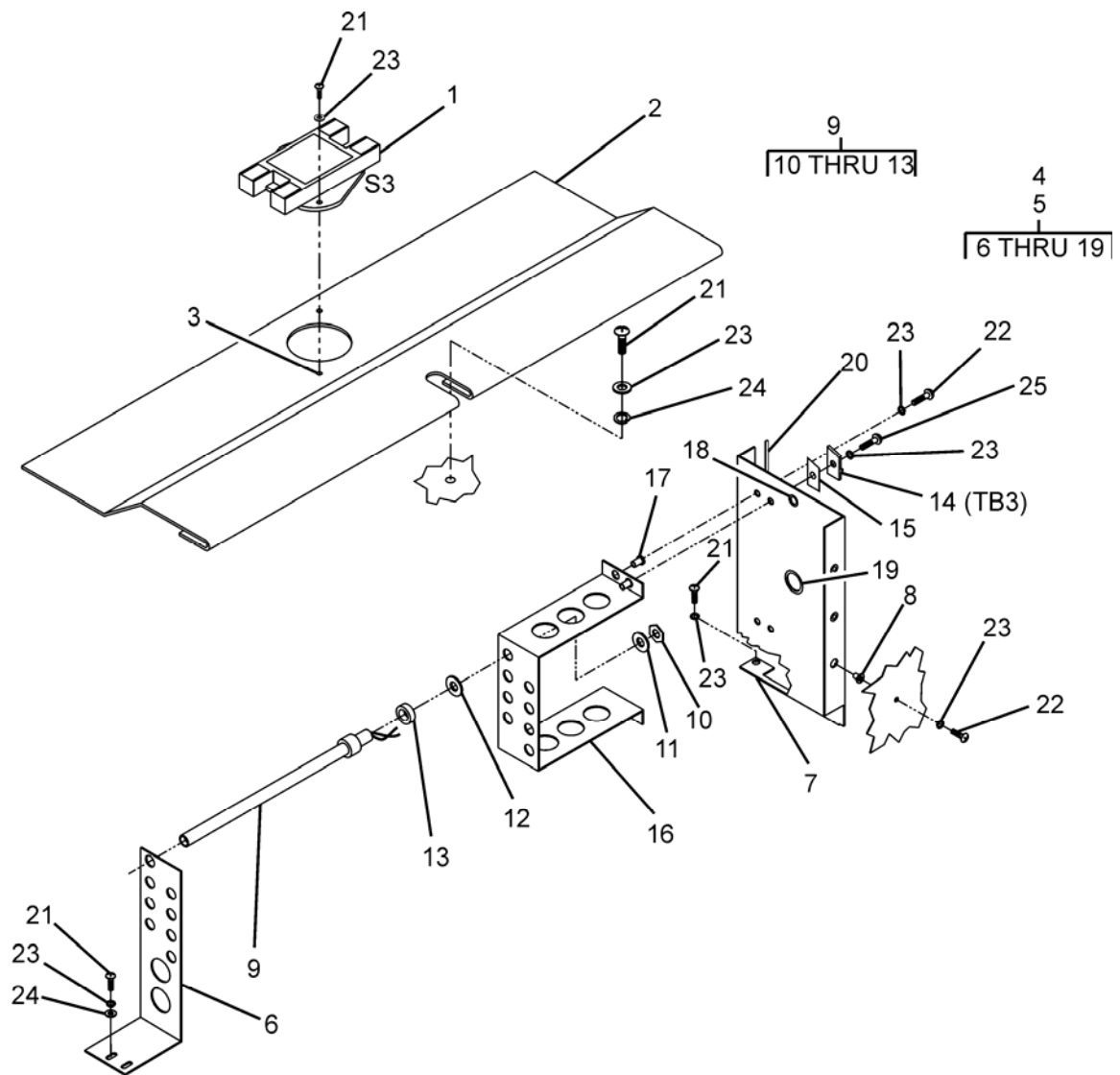


Figure 11. S3 Heater Cutout Switch and Heater Elements

(1) ITEM NO.	(2) SMR CODE	(3) NSN	(4) CAGEC	(5) PART NUMBER	(6) DESCRIPTION AND USABLE ON CODE (UOC)	(7) QTY
GROUP 0402 ELECTRICAL HEATING ELEMENTS						
FIG. 11 S3 HEATER CUTOUT SWITCH AND HEATER ELEMENTS						
1	PAOZZ	5930-01-537-1621	82647	S20490L22-12	. SWITCH, S3.....	1
2	XBOZZ		0V5R4	S9160-9922	. BRACKET, THERMOSTATIC SWITCH	1
3	PAOZZ	5310-01-323-7090	96906	MS27130-S13K	. NUT, PLAIN, BLIND, RIV	2
4	XBOOO		0V5R4	S9150-4258	. HEATER ELEMENT ASSEMBLY ... UOC: 83J	1
5	XBOOO		0V5R4	S9160-4258	. HEATER ELEMENT ASSEMBLY ... UOC: 83K	1
6	XBOZZ		0V5R4	S9160-9967	. BRACKET HEATER END	1
7	XBOZZ		0V5R4	S9160-9968	. . PLATE, HEATER	1
MOUNTING						
8	PAOZZ	5310-00-616-2589	80205	NAS1330S08K106	. . . RIVNUT	4
9	PBOZZ	4540-00-444-7114	97403	13216E6124-1	. . HEATING ELEMENT,	8
ELECTRICAL						
10	PAOZZ	5310-00-250-9477	80205	MS35649-2254	. . . NUT, PLAIN, HEXAGON.....	8
11	XBOZZ		39428	91113A3032	. . . WASHER, LOCK.....	8
12	XBOZZ		39428	98017A205	. . . WASHER, FLAT	8
13	XBOZZ		97403	13216E6124/IW	. . . WASHER, INSULATING	8
14	PAOZZ	5940-00-983-6144	81349	42TB	. . TERMINAL BOARD, TB3.....	1
15	XBOZZ	9905-01-142-3106	26405	MS602-8	. . PLATE, DESIGNATION	1
16	XBOZZ		0V5R4	S9160-9966	. . BRACKET, HEATER.....	1
17	PAOZZ	5310-00-616-2589	80205	NAS1330S08K106	. . . RIVNUT	4
18	PAOZZ	5325-00-833-9126	96906	MS35489-146	. . GROMMET, NONMETALLIC 0.563	1
19	PAOZZ	5325-00-174-5317	96906	MS35489-4	. . GROMMET, NONMETALLIC,..... 0.875	1
20	XBOZZ		97403	13216E66122	. SEAL, H-CHANNEL	1
21	PAOZZ	5305-00-984-6194	96906	MS35206-246	. SCREW, MACHINE,	7
22	PAOZZ	5305-00-984-6195	80205	MS35206-247	. SCREW, MACHINE	5
23	PAOZZ	5310-00-045-3299	80205	MS35338-42	. WASHER, LOCK ,	14
24	PAOZZ	5310-00-821-2366	97403	13214E3469	. WASHER, FLAT CAD PLTD,..... 0.18 ID	4
25	PAOZZ	5305-00-984-6199	96906	MS35206-251	. . SCREW, MACHINE	2
END OF FIGURE						

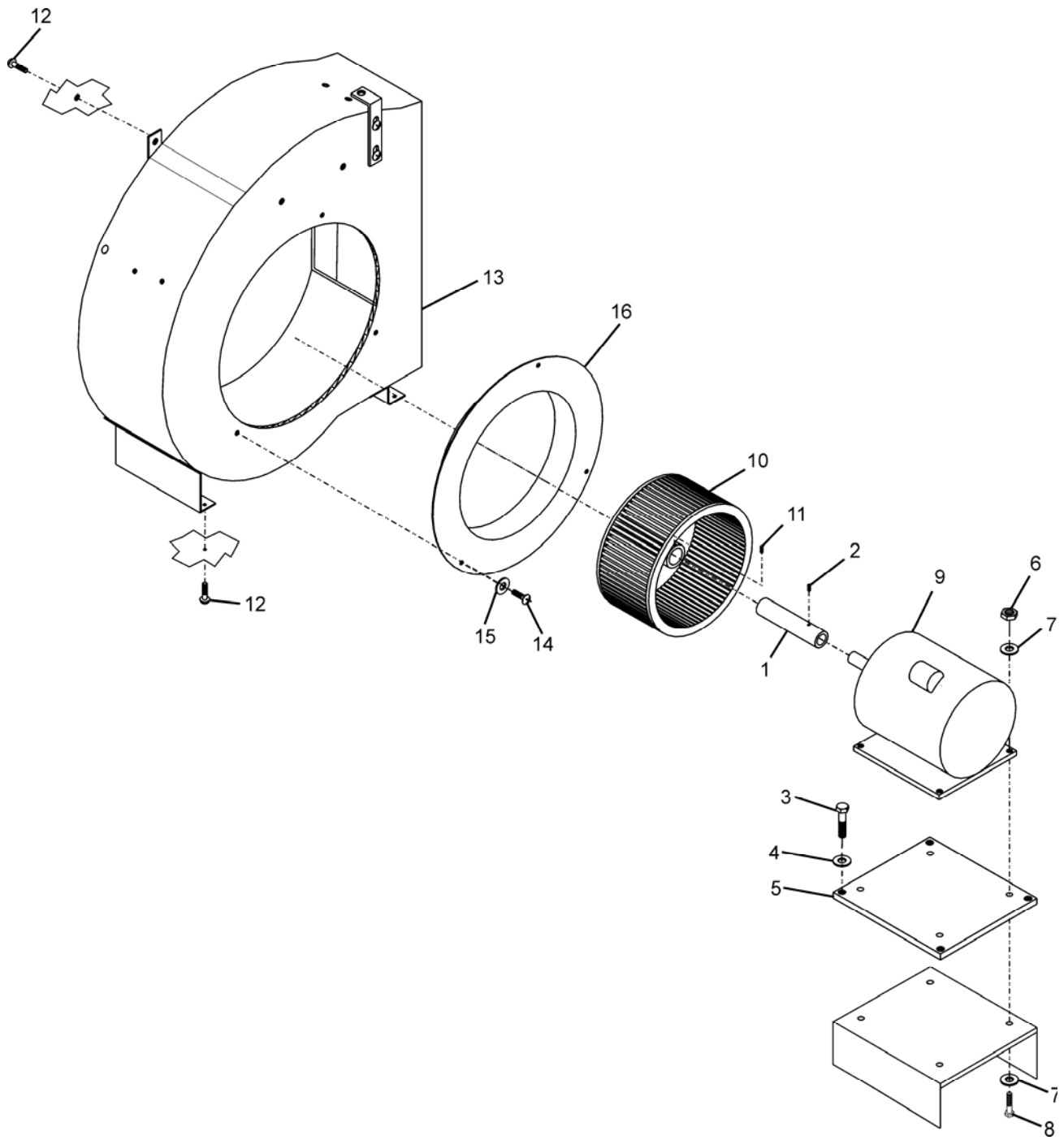
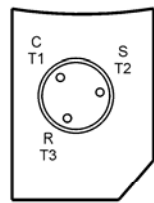
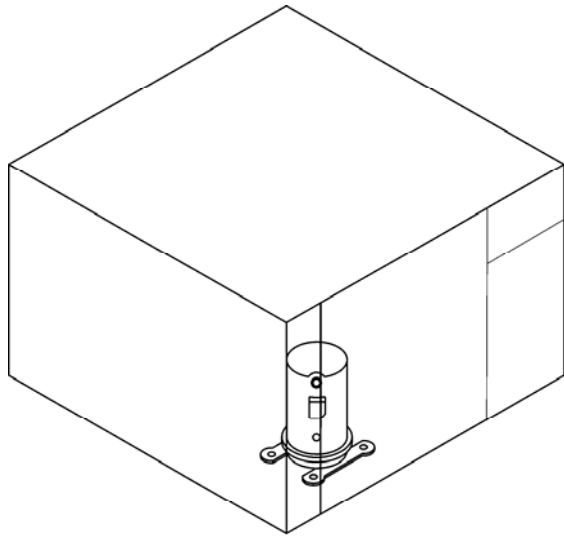


Figure 12. Condenser Fan and Motor

(1) ITEM NO.	(2) SMR CODE	(3) NSN	(4) CAGEC	(5) PART NUMBER	(6) DESCRIPTION AND USABLE ON CODE (UOC)	(7) QTY
					GROUP 05 CONDENSER FAN AND MOTOR	
					FIG. 12 CONDENSER FAN AND MOTOR	
1	XBOZZ		0V5R4	S9160-6142	. SHAFT EXTENSION	1
2	PAOZZ	5305-00-177-5546	80205	MS51964-118	. . SETSCREW.....	2
3	PAOZZ	5305-00-068-0516	80204	B1821BH025F113 N	. SCREW, CAP	4
4	PAOZZ	5310-00-809-4058	96906	MS27183-10	. WASHER, FLAT	4
5	XBOZZ		0V5R4	S9160-9909	. PLATE, MOTOR MOUNT.....	1
6	PAOZZ	5310-00-959-1488	81349	M45913/2-FG5C	. NUT, LOCK, 3/8 - 24.....	4
7	PAOZZ	5310-00-081-4219	96906	MS27183-12	. WASHER, FLAT, NO.12.....	4
8	PAOZZ	5305-00-225-3839	80205	MS90725-8	. SCREW, CAP, 3/8 X 24 X 1	4
9	PAOZZ	6105-01-541-9895	0V5R4	S9160-9334	. MOTOR, AC.....	1
10	XBOZZ		0V5R4	S9160-9355	. IMPELLER, FAN,	1
					CENTRIFUGAL	
11	PAOZZ	5225-01-147-6728	96906	MS18065-20	. . SETSCREW.....	1
12	PAOZZ	5305-00-063-3503	80205	MS24693-S51	. SCREW, MACHINE,	7
					COUNTERSUNK	
13	XBOZZ		0V5R4	S9160-9960	. HOUSING, CONDENSER FAN..	1
14	PAOZZ	5305-00-984-6193	80205	MS35206-246	. SCREW, MACHINE	3
15	PAOZZ	5310-00-921-2366	80205	MS35338-42	. WASHER, FLAT	3
16	XBOZZ		0V5R4	S9160-6358	. RING, CONDENSER FAN.....	1
END OF FIGURE						



DETAIL "A"

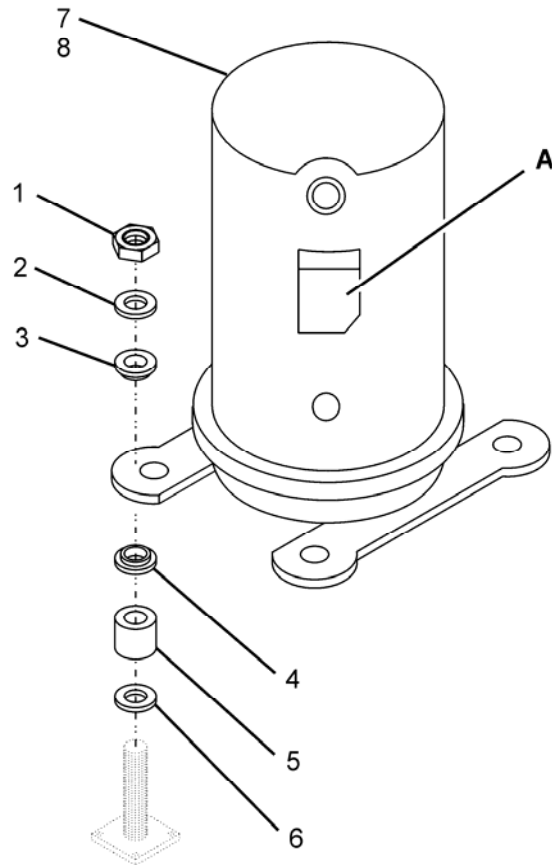


Figure 13. Compressor

(1) ITEM NO.	(2) SMR CODE	(3) NSN	(4) CAGEC	(5) PART NUMBER	(6) DESCRIPTION AND USABLE ON CODE (UOC)	(7) QTY
					GROUP 06 COMPRESSOR	
					FIG. 13 COMPRESSOR	
1	PAFZZ	5310-01-542-0666	0V5R4	S9500-3/8/16LK	. NUT	4
2	XBFZZ		0V5R4	S9160-9985	. WASHER, COMPRESSOR	4
3	PAFZZ		0V5R4	S9500-8165-3	. GROMMET	4
4	PAFZZ	5342-01-042-5759	97403	13225E8453	. MOUNT, RESILIENT, WEA	4
5	PAFZZ		0V5R4	S9500-8165-1	. SPACER.....	4
6	PAFZZ		0V5R4	S9500-8165-2	. SPACER, RUBBER.....	4
7	PAFZZ		14569	CR28K6-TF5-270	. COMPRESSOR	1
					(S9160-3793-3) (0V5R4)	
					(FOR 9160-18KH-3 UNIT)	
					UOC: 83K	
8	PAFZZ		14569	CR28K6-PFV-270	. COMPRESSOR	1
					(S9150-3793-1) (0V5R4)	
					(FOR 9150-18KH-1 UNIT)	
					UOC: 83J	
					END OF FIGURE	

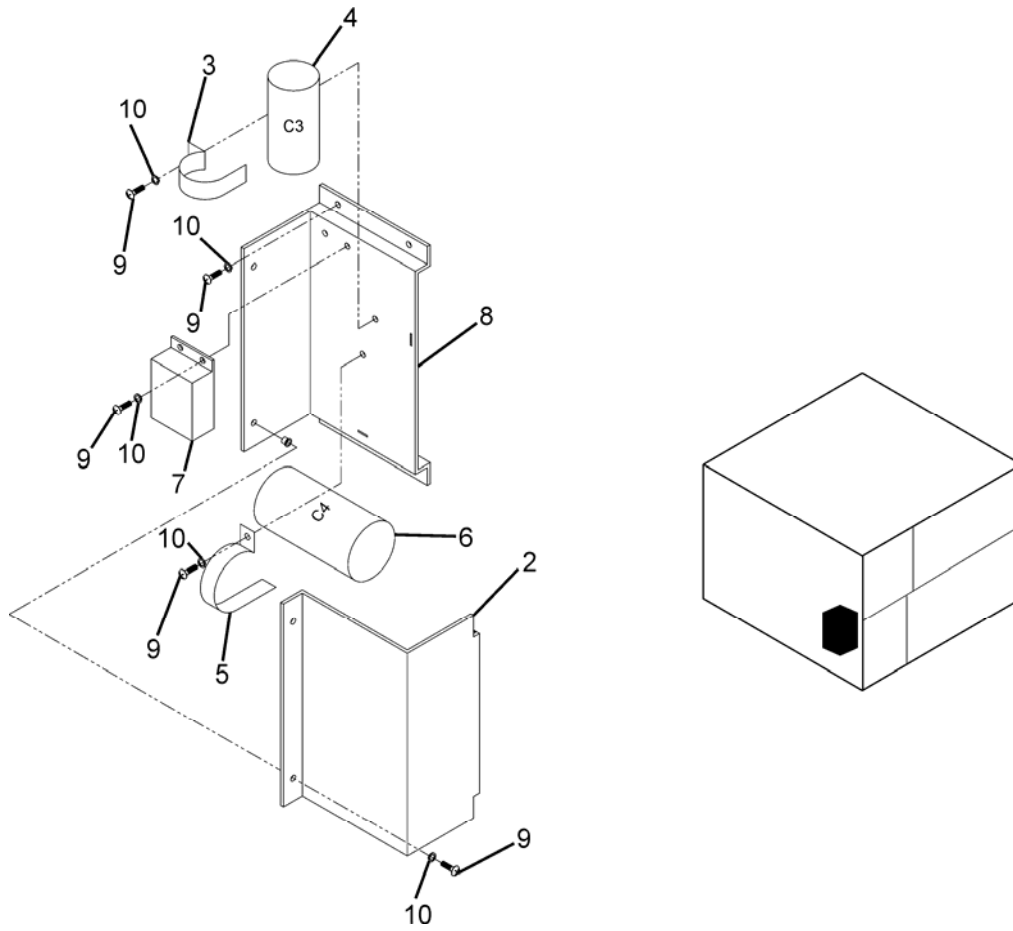


Figure 14. Start Kit, B1 Compressor, S9150-18KH-1 Unit

(1) ITEM NO.	(2) SMR CODE	(3) NSN	(4) CAGEC	(5) PART NUMBER	(6) DESCRIPTION AND USABLE ON CODE (UOC)	(7) QTY
					GROUP 06 COMPRESSOR ASSEMBLY	
					FIG. 14 START KIT, B1 COMPRESSOR	
1	PAOOO		0V5R4	S9150-STKIT	. STARTUP KIT UOC: 83J	1
2	XBOZZ		0V5R4	S9160-9940	. COVER, CAPACITOR UOC: 83J	1
3	PAOZZ		0V5R4	S9160-9937	. STRAP UOC: 83J	1
4	PAOZZ	5910-01-466- 9982	0V5R4	85PS330-D14	. CAPACITOR, FIXED, ELE, CTROLYTIC, START, C3 UOC: 83J	1
5	XBOZZ		0V5R4	S9160-9938	. STRAP, RUN CAPACITOR UOC: 83J	1
6	PAOZZ	5910-01-466- 9981	0V5R4	P85E72	. CAPACITOR, FIXED, ELEC MOTOR, RUN, C4 UOC: 83J	1
7	PAOZZ	5945-01-466- 8133	0WC42	38-T067-F4583	. RELAY, ELECTROMAGNETIC, ... (CURRENT SENSING RELAY) R1 UOC: 83J	1
8	XBOZZ		0V5R4	S9160-9935	. PLATE, MOUNTING, CAPACITOR UOC: 83J	1
9	PAOZZ	5305-00-984- 6194	80205	MS35206-246	. SCREW, MACHINE, CAD PLATED, NO. 8, 0.50 IN. UOC: 83J	4
10	PAOZZ	5310-00-045- 3299	80205	MS35338-42	. WASHER, LOCK, CAD PLTD, NO.8 UOC: 83J	4
END OF FIGURE						

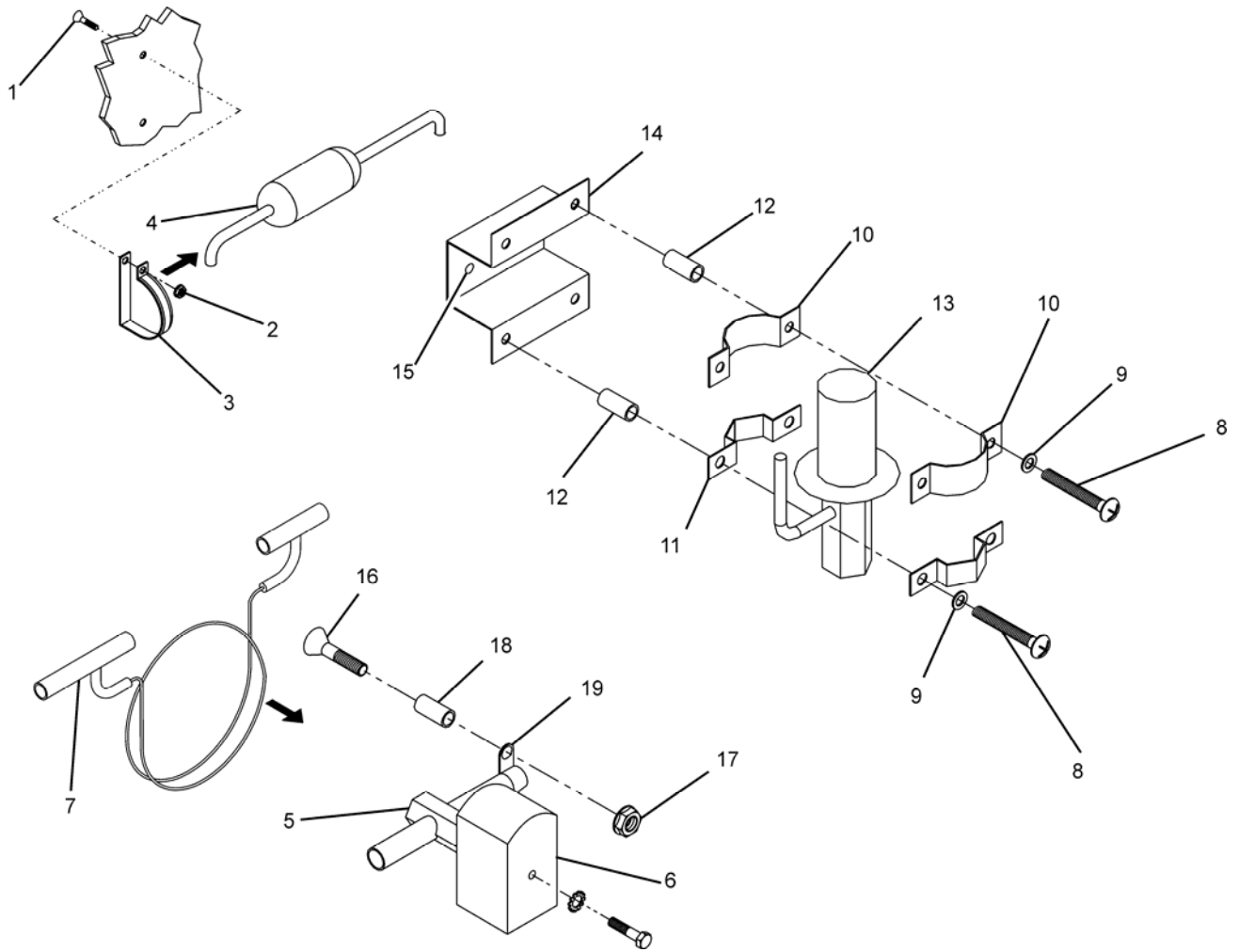


Figure 15. Filter-Dryer, Liquid Line Solenoid Valve, and Hot Gas Bypass Valve

(1) ITEM NO.	(2) SMR CODE	(3) NSN	(4) CAGEC	(5) PART NUMBER	(6) DESCRIPTION AND USABLE ON CODE (UOC)	(7) QTY
GROUP 07 REFRIGERATION COMPONENTS						
FIG. 15 FILTER-DRYER, LIQUID LINE SOLENOID VALVE, AND HOT GAS BYPASS VALVE						
1	PAFZZ	5305-00-051-2353	96906	MS24693-S55	. SCREW, MACHINE	1
2	PAFZZ	5310-00-811-3494	96906	MS21044-N08	. NUT, LOCK	1
3	PAFZZ	5340-00-685-0508	81343	AS21919WDG37	. CLAMP, LOOP	1
4	PAFZZ	4130-00-050-0267	78462	C-053-S	. FILTER-DRYER,	1
REFRIGERATION						
5	PAFZZ	4810-01-542-0706	70255	S200-RB-313	. VALVE, SOLENOID, LIQUID	1
LINE						
6	PAFZZ	5950-01-542-0669	78462	S6S130-24VAC	. COIL, SOLENOID VALVE, L1	1
7	XBFZZ		0V5R4	S9500-THEQ	. SUPERHEATER	1
8	PAFZZ	5305-00-984-6194	80205	MS35206-246	. SCREW, MACHINE, 10-32 x 2	4
9	PAFZZ	5310-00-045-3296	80205	MS35338-43	. WASHER, LOCK	4
10	XBFZZ		0V5R4	S9500- E9950	. STRAP, VALVE	2
11	XBFZZ		0V5R4	S9160-9945	. BRACKET, HGBP	2
12	PAFZZ	5365-01-541-7683	39428	923510A311	. SPACER, ¼	4
13	PAFZZ	4820-01-542-1558	0V5R4	S9160-6174	. VALVE, HOT GAS BYPASS	1
14	XBFZZ		0V5R4	S9160-9951	. BRACKET, VALVE MOUNTING ...	1
15	PAFZZ	5310-01-055-8419	80205	MS27130-S25K	. . NUT, PLAIN, BLIND, RIV	2
16	PAFZZ	5305-00-051-2355	96906	MS24693-S60	. SCREW, MACHINE	1
17	PAFZZ	5310-00-811-3494	96906	MS21044-N08	. NUT, LOCK	1
18	PAFZZ		39428	92320A530	. SPACER, 1-¼	1
19	PAFZZ	5340-00-5980146	81343	AS21919WDG6	. CLAMP, LOOP	1
END OF FIGURE						

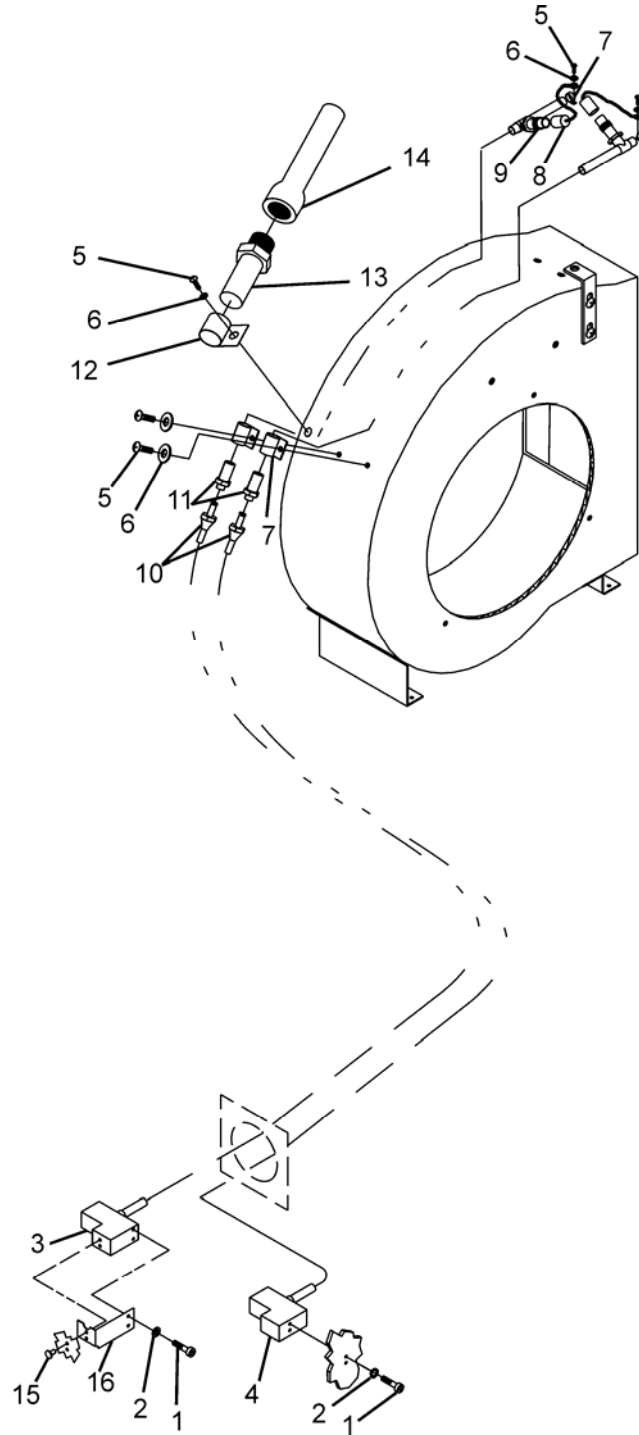


Figure 16. Pressure Switches, Pressure Relief Valve, and Service Valves

(1) ITEM NO.	(2) SMR CODE	(3) NSN	(4) CAGEC	(5) PART NUMBER	(6) DESCRIPTION AND USABLE ON CODE (UOC)	(7) QTY
GROUP 07 REFRIGERATION COMPONENTS						
FIG. 16 PRESSURE SWITCHES, PRESSURE RELIEF VALVE, AND SERVICE VALVES						
1	PAFZZ	5305-00-978-9348	96906	MS16997-20	. SCREW, MACHINE.....	4
2	PAFZZ	5310-00-045-4007	96906	MS35338-41	. WASHER, LOCK.....	4
3	PAFZZ	5930-00-190-8729	97403	13216E6215-3	. SWITCH, PRESSURE, HIGH, S5	1
4	PAFZZ	5930-00-190-8730	97403	13216E6215-1	. SWITCH, PRESSURE, LOW, S4	1
5	PAFZZ	5305-00-984-6194	80205	MS35206-246	. SCREW, MACHINE.....	5
6	PAFZZ	5310-00-045-3299	96906	MS35338-42	. WASHER, LOCK CAD PLTD, NO. 8	5
7	PAFZZ	5340-00-598-0146	96906	AS21919WDG6	. CLAMP, LOOP	4
8	PAFZZ	5935-01-466-8138	0V5R4	S9540	. COVER, ELECTRICAL CO	2
9	PAFZZ	4820-01-012-6437	17529	AV46	. VALVE, PNEUMATIC.....	2
10	PAFZZ	4730-00-189-2737	81343	J5134- 010166BA	. NUT, TUBE COUPLING.....	2
11	PAFZZ	4730-01-037-4919	81343	J5134- 4010104BA	. COUPLING, TUBE	2
12	PAFZZ	5340-00-286-9127	81343	AS21919WDG12	. CLAMP, LOOP	1
13	PAFZZ	4820-00-845-4168	28193	5221	. VALVE, SAFETY RELIEF	1
14	PAFZZ		41947	W1206	. ADAPTER, FEMALE, 1/4	1
15	XBFZZ		07707	ABS44	. RIVET	2
16	XBFZZ		0V5R4	S9500-9944	. BRACKET, MOUNTING.....	1
END OF FIGURE						

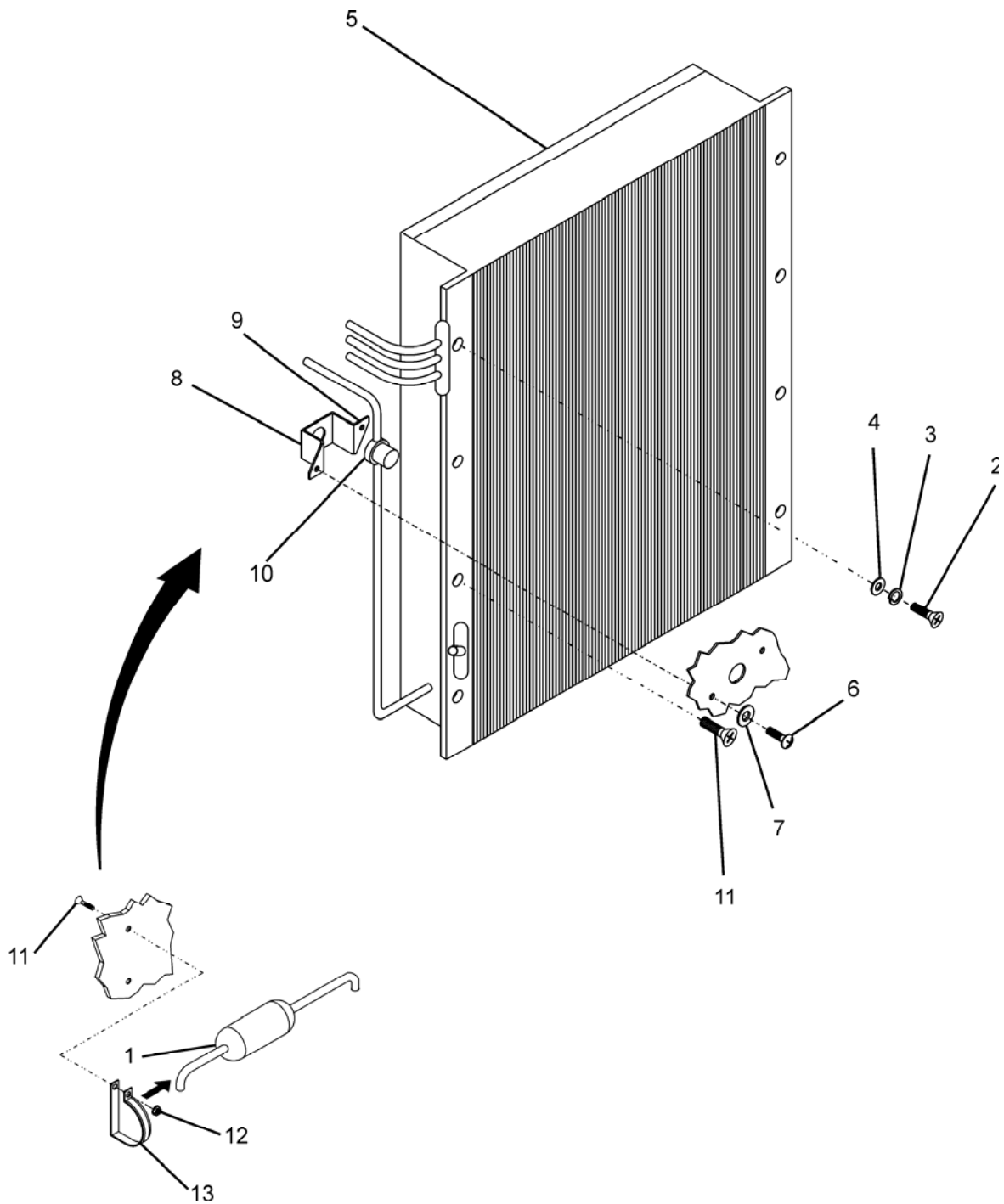


Figure 17. Condenser Coil, Liquid Sight Indicator and Receiver

(1) ITEM NO.	(2) SMR CODE	(3) NSN	(4) CAGEC	(5) PART NUMBER	(6) DESCRIPTION AND USABLE ON CODE (UOC)	(7) QTY
GROUP 07 REFRIGERATION COMPONENTS						
FIG. 17 CONDENSER COIL, LIQUID SIGHT INDICATOR, AND RECEIVER						
1	XBFZZ		0V5R4	S9160-6163-3	. RECEIVER, LIQUID..... REFRIGERANT	1
2	PAFZZ	5305-00-984-6195	96906	MS35206-247	. SCREW, MACHINE	2
3	PAFZZ	5310-00-045-3299	80205	MS35338-42	. WASHER, LOCK.....	2
4	PAFZZ	5310-00-821-2366	97403	13214E3469	. WASHER, FLAT.....	2
5	PAFZZ	4130-01-542-1191	0V5R4	S9160-9406	. COIL, CONDENSER.....	1
6	PAFZZ	5305-00-984-6198	80205	MS35206-250	. SCREW, MACHINE CAD.....	2
7	PAFZZ	5310-00-045-3299	96906	MS35338-42	. WASHER, LOCK.....	2
8	XBFZZ		0V5R4	S9160-9926	. BRACKET, SIGHT GLASS.....	1
9	PAFZZ	5310-01-323-7090	96906	MS27130-S13K	. . NUT, PLAIN, BLIND, RIVET	2
10	XBFZZ		0V5R4	S9160-6155	. INDICATOR, SIGHT, LIQUID	1
11	PAFZZ	5305-00-051-2353	96906	MS24693-S55	. SCREW, MACHINE	3
12	PAFZZ	5310-00-811-3494	80205	MS21044N08	. NUT, LOCK.....	1
13	PAFZZ	5340-00-582-7354	81343	AS21919WDG34	. CLAMP, LOOP	1
END OF FIGURE						

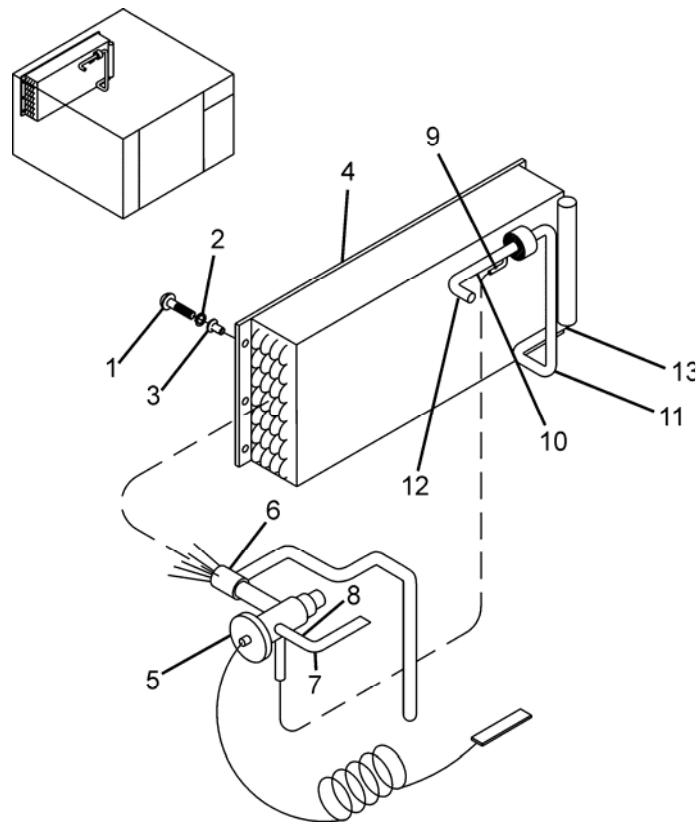


Figure 18. Evaporator Coil and Thermal Expansion Valve

(1) ITEM NO.	(2) SMR CODE	(3) NSN	(4) CAGEC	(5) PART NUMBER	(6) DESCRIPTION AND USABLE ON CODE (UOC)	(7) QTY
GROUP 07 REFRIGERATION COMPONENTS						
FIG. 18 EVAPORATOR COIL AND THERMAL EXPANSION VALVE						
1	PAFZZ	5305-00-984-6194	80205	MS35206-246	. SCREW, MACHINE	6
2	PAFZZ	5310-00-045-3299	80205	MS35338-42	. WASHER, LOCK	6
3	PAFZZ	5310-00-177-0994	80205	NAS1330SRE271	. NUT, PLAIN, BLIND, RIVET	6
4	PBFZZ	4130-01-503-5553	14852	3CY1205R	. COIL, EVAPORATOR	1
5	PAFZZ		70255	RIVE-2-GA-RPB 3 X 4	. VALVE, EXPANSION	1
6	XBFZZ		0V5R4	S9500-6345-1	. DISTRIBUTOR, REFRIGERANT... (RESTRICTOR)	1
7	XBFZZ		41947	W02305	. ELBOW, 90DEG	1
8	MFFZZ		81346	ASTM- B280X.375OD	. TUBE, METALLIC..... MAKE FROM P/N ASTM- B280X.375OD (81345), CUT TO LENGTH	AR
9	MFFZZ		81346	ASTM- B280X.250OD	. TUBE, METALLIC..... MAKE FROM P/N ASTM- B280X.250OD (81345), CUT TO LENGTH	AR
10	MFFZZ		81346	ASTM- B280X.875OD	. TUBE, METALLIC..... MAKE FROM P/N ASTM- B280X.875OD (81345), CUT TO LENGTH	AR
11	PAFZZ	4730-00-254-6447	96906	MS35917-7	. ELBOW, TUBE	4
12	PAFZZ	4730-01-328-6117	96906	MS35928-7	. ELBOW, TUBE	1
13	MFFZZ		81343	APT07838AST- ME84TESTME- THOD	. RUBBER, INSULATION,	AR
END OF FIGURE						

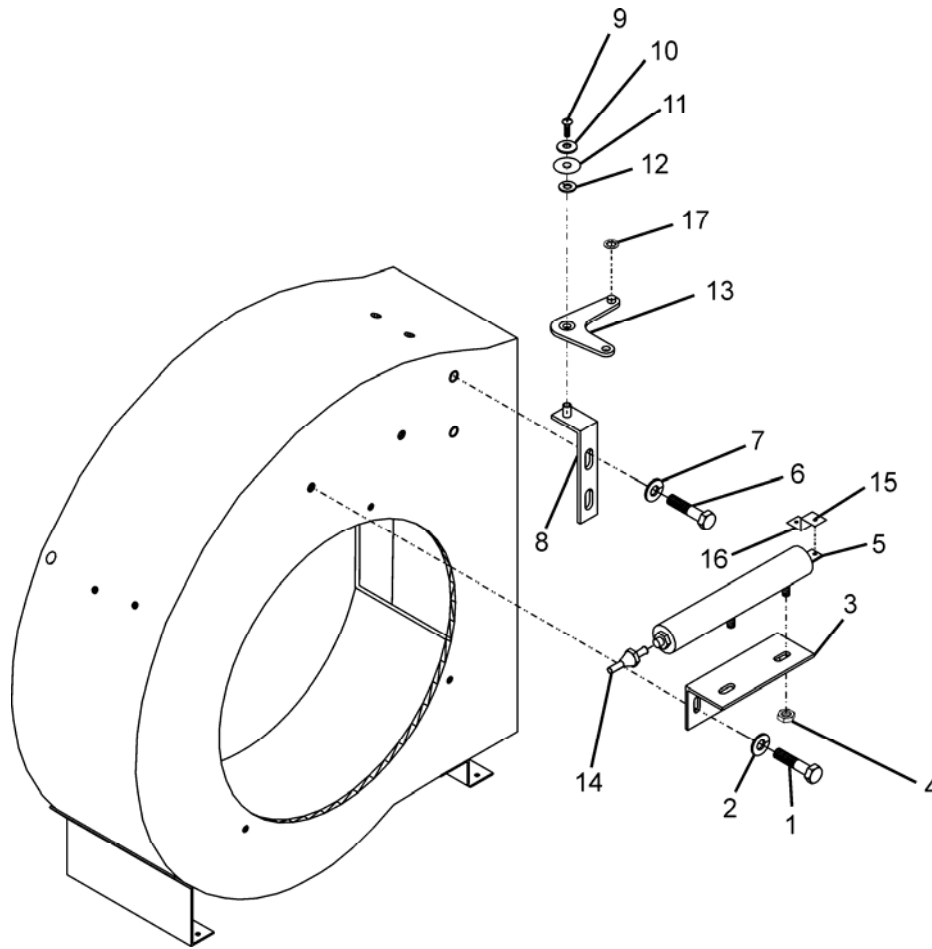


Figure 19. Actuator, Louver, Condenser Air Discharge

(1) ITEM NO.	(2) SMR CODE	(3) NSN	(4) CAGEC	(5) PART NUMBER	(6) DESCRIPTION AND USABLE ON CODE (UOC)	(7) QTY
GROUP 07 REFRIGERATION COMPONENTS						
FIG. 19 ACTUATOR, LOUVER, CONDENSER AIR DISCHARGE						
1	PAFZZ	5305-00-993-1848	96906	MS35207-265	. SCREW, MACHINE	2
2	PAFZZ	5310-00-045-3296	96906	MS35338-43	. WASHER, LOCK.....	2
3	XBFZZ		0V5R4	S9160-9953	. BRACKET, LINEAR, ACTUATOR..	1
4	PAFZZ	5310-00-997-1888	80205	MS35649-2252	. NUT, PLAIN, HEXAGON.....	2
5	PAFZZ	4130-00-479-2744	97403	13216E6330	. ACTUATOR , LINEAR.....	1
6	PAFZZ	5305-00-993-1848	96906	MS35207-265	. SCREW, MACHINE	2
7	PAFZZ	5310-00-045-3296	96906	MS35338-43	. WASHER. LOCK.....	2
8	XBFZZ		0V5R4	S9160-9946	. BRACKET, PIVOT.....	1
9	PAFZZ	5305-00-984-6191	80205	MS35206-243	. SCREW, MACHINE	1
10	PAFZZ		97403	1321E3469	. WASHER, FLAT	1
11	PAFZZ	5310-00-562-2816	39824	90295A140	. WASHER, FLAT.....	1
12	PAFZZ	5310-00-582-5965	96909	MS35338-44	. WASHER, LOCK.....	2
13	XBOZZ		0V5R4	S9160-9950	. ARM, PIVOT, BODY	1
14	PAFZZ	4730-00-722-2381	41947	W-1206	. ADAPTER, STRAIGHT, PIPE,..... PIPE TO TUBE	1
15	PAFZZ	5320-00-119-6754	96906	MS20470AD2-3	. RIVET, SOLID	2
16	XBFZZ		0V5R4	S9160-6128	. CLIP, ACTUATOR.....	1
17	PAFZZ	5310-01-155-1895	39428	94807A029	. NUT, PUSH-ON	1
END OF FIGURE						

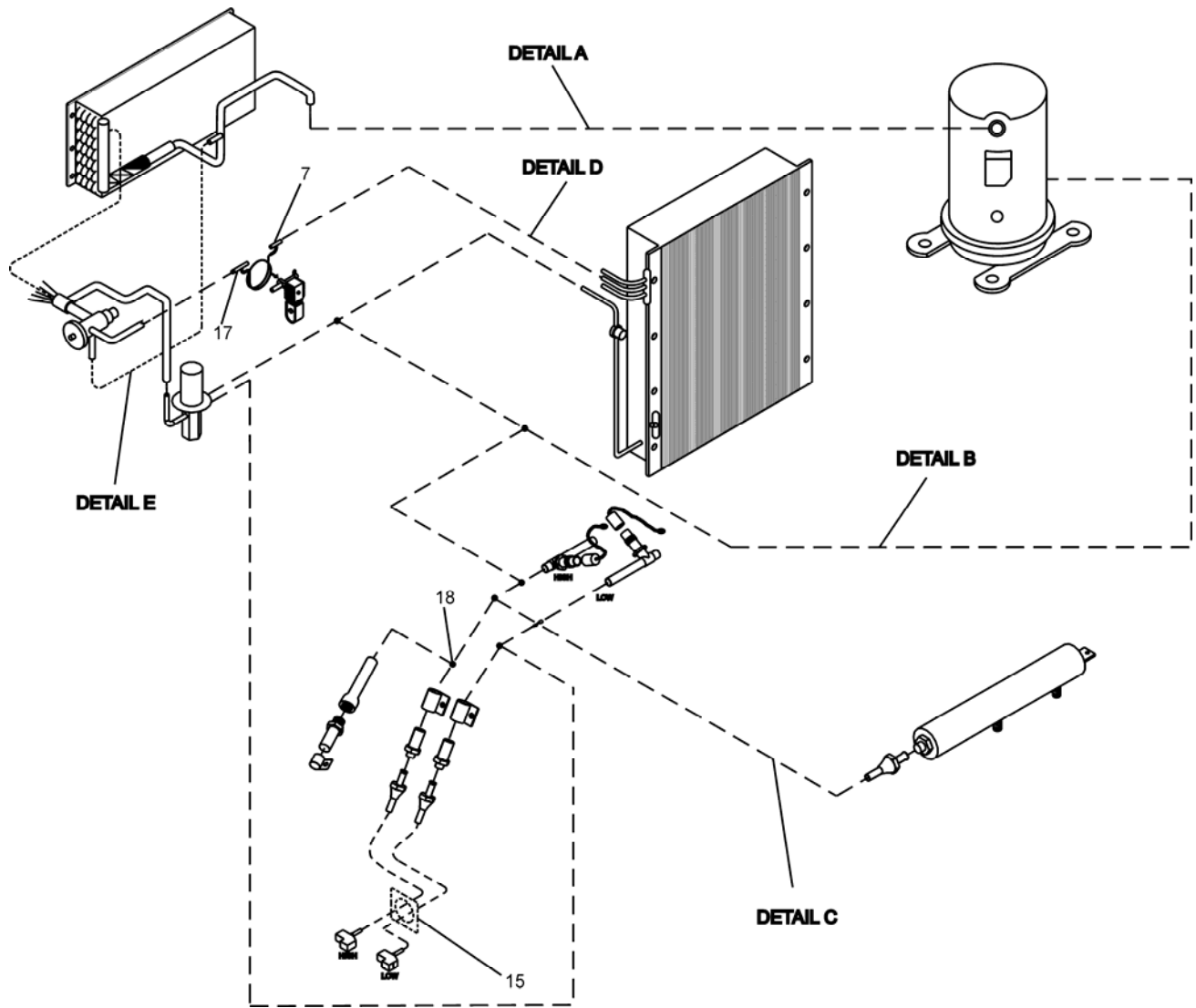


Figure 20. Tubing and Fittings (Sheet 1 of 2)

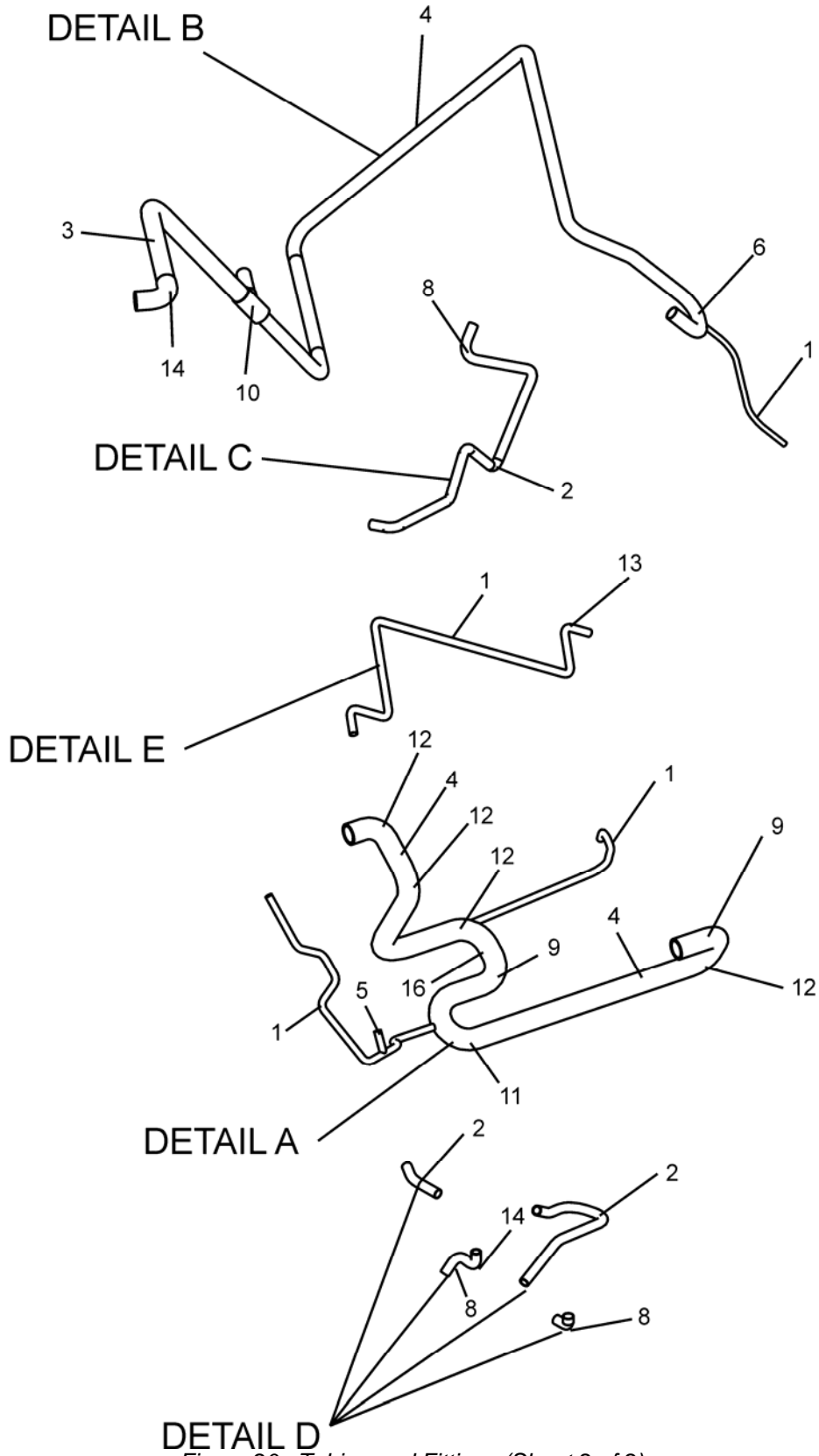


Figure 20. Tubing and Fittings (Sheet 2 of 2)

(1) ITEM NO.	(2) SMR CODE	(3) NSN	(4) CAGEC	(5) PART NUMBER	(6) DESCRIPTION AND USABLE ON CODE (UOC)	(7) QTY
GROUP 07 REFRIGERATION COMPONENTS						
FIG. 20 TUBING AND FITTINGS						
1	MFFZZ		81346	ASTM- B280X.250OD	. TUBE, METALLIC MAKE FROM... P/N ASTM-B280X.250OD (81346), CUT TO LENGTH	AR
2	MFFZZ		81346	ASTM- B280X.375OD	. TUBE, METALLIC MAKE FROM... P/N ASTM-B280X.375OD (81346), CUT TO LENGTH	AR
3	MFFZZ	4710-00-277-5529	81346	ASTM- B280X.500OD	. TUBE, METALLIC MAKE FROM... P/N ASTM-B280X.500OD (81346), CUT TO LENGTH	AR
4	MFFZZ		81346	ASTM- B280X.875OD	. TUBE, METALLIC MAKE FROM... P/N ASTM-B280X.875OD (81346), CUT TO LENGTH	AR
5	PAFZZ	4730-00-257-2163	96906	MS35929-2	. TEE, TUBE 1/4 X 1/4 X 1/4	1
6	PAFZZ	4730-00-818-7778	41947	W-40324	. TEE, TUBE 1/4 X 3/8 X 3/8	2
7	PAFZZ	4730-00-815-5672	41947	W-40363	. TEE, TUBE 1/4 X 1/2 X 1/2	2
8	PAFZZ	4730-00-277-7922	41947	W2312	. ELBOW, TUBE 3/8 X 3/8 X 90 DEG	2
9	PAFZZ	4730-00-254-6447	96906	MS35917-7	. ELBOW, TUBE 7/8 X 7/8 X 90 DEG	3
10	PAFZZ	4730-00-263-6463	41947	W4003	. ELBOW, TUBE 7/8 X 7/8 X 90 DEG	3
11	PAFZZ	4730-00-203-7093	97403	13216E6176-5	. ELBOW, TUBE	2
12	PAFZZ	4730-01-328-6117	96906	MS35928-7	. ELBOW, TUBE	1
13	PAFZZ	4730-00-782-5138	96906	MS35928-2	. ELBOW, TUBE	1
14	PAFZZ	4730-00-471-5663	41947	W2716	. ELBOW, TUBE	1
15	PAOZZ	5325-00-171-6387	96906	MS35489-51	. GROMMET, NONMETALLIC	1
16	PAFZZ	4730-00-813-3194	41947	W2828	. ELBOW, TUBE	1
17	PAFZZ	4730-00-822-1274	41947	W1706	. REDUCER, TUBE	1
18	PAFZZ	4730-00-289-4221	41947	A3431	. COUPLING, TUBE	1
END OF FIGURE						

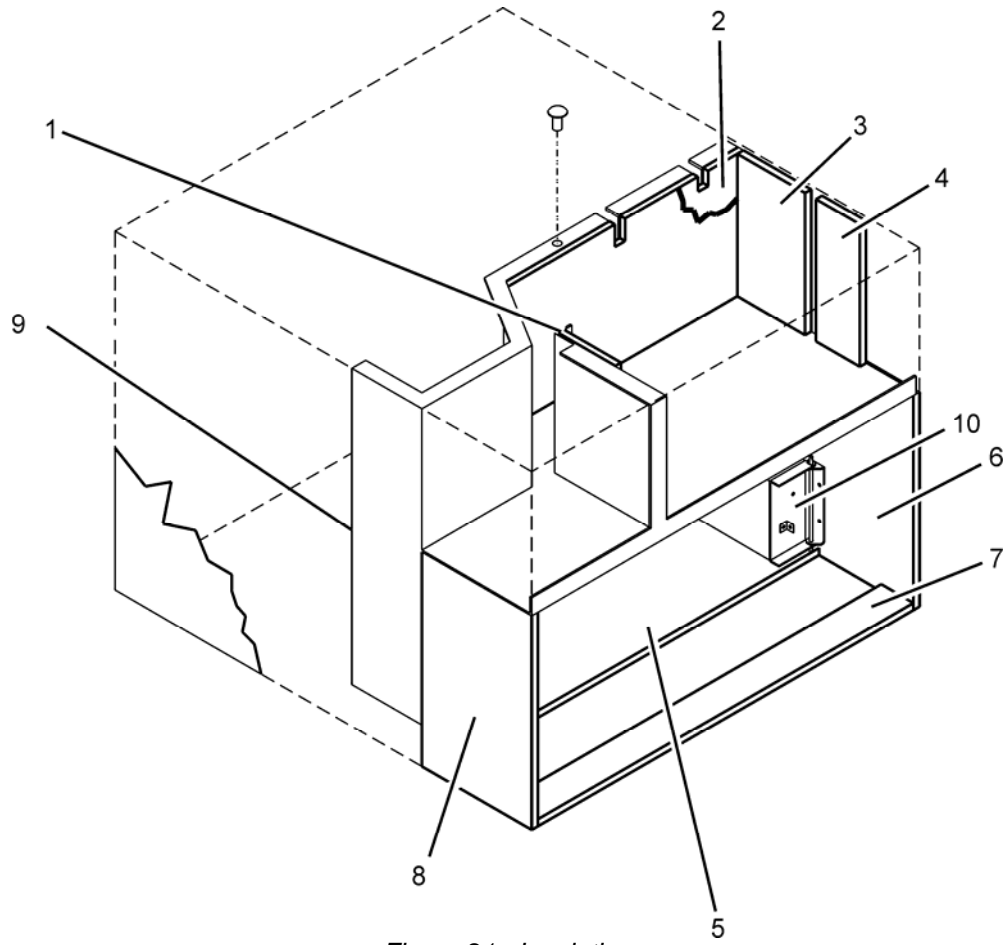


Figure 21. Insulation

(1) ITEM NO.	(2) SMR CODE	(3) NSN	(4) CAGEC	(5) PART NUMBER	(6) DESCRIPTION AND USABLE ON CODE (UOC)	(7) QTY
GROUP 08 GENERAL USE STANDARDIZED PARTS						
GROUP 0801 BULK MATERIAL						
FIG. 21. INSULATION						
1	MFOZZ		0V5R4	S9500-6701/77	. INSULATION, THERMAL MAKE FROM INSULATION, P/N ASTM-C534TP2, .75THK	1
2	MFOZZ		0V5R4	S9500-6701/81	. INSULATION, THERMAL MAKE FROM INSULATION, P/N ASTM-C534TP2, 1.0THK	1
3	MFOZZ		0V5R4	S9500-6701/80	. INSULATION, THERMAL MAKE FROM INSULATION, P/N ASTM-C534TP2, 1.0THK	1
4	MFOZZ		0V5R4	S9500-6701/79	. INSULATION, THERMAL MAKE FROM INSULATION, P/N ASTM-C534TP2, .75THK	1
5	MFOZZ		0V5R4	S9500-6701/85	. INSULATION, THERMAL MAKE FROM INSULATION, P/N ASTM-C534TP2, 1.0THK	1
6	MFOZZ		0V5R4	S9500-6701/82	. INSULATION, THERMAL MAKE FROM INSULATION, P/N ASTM-C534TP2, .75THK	1
7	MFOZZ		0V5R4	S9500-6701/84	. INSULATION, THERMAL MAKE FROM INSULATION, P/N ASTM-C534TP2, 1.0THK	1
8	MFOZZ		0V5R4	S9500-6701/83	. INSULATION, THERMAL MAKE FROM INSULATION, P/N ASTM-C534TP2, .75THK	1
9	MFOZZ		0V5R4	S9500-6701/86	. INSULATION, THERMAL MAKE FROM INSULATION, P/N ASTM-C534TP2, .75THK	1
10	MFOZZ		0V5R4	S9160-13-22	. INSULATION, THERMAL MADE FROM INSULATION, P/N ASTM-C534TP2, 0.500 THK	1
END OF FIGURE						

Table 1. Wire List for S9150-18KH-1 Unit

Labels From To	Wire Size AWG	Wire Color	Type of End to End Connection		Length Of Wire	Remarks
J1-A TB1-4	12	BLACK	SOLDER	#10 RING PN10-10R	97	J1
J1-B TB1-5	12	RED	SOLDER	#10 RING PN10-10R	96	
J1-E CASE GND (E1)	12	GREEN	SOLDER	#10 RING PN10-10R	66	
J1-C NOT USED	--	--	PIN ONLY		--	
J1-D NOT USED	--	--	PIN ONLY		--	
J2-A TB1-1	12	BLACK	SOLDER	#10 RING PN10-10R	16	J2
J2-B TB1-2	12	RED	SOLDER	#10 RING PN10-10R	15	
J2-E GND (E2)	12	GREEN	SOLDER	#10 RING PN10-10R	7	
J2-C NOT USED	--	--	PIN ONLY		--	
J2-D NOT USED	--	--	PIN ONLY		--	
CASE GND (E1) GND (E2)	12	GREEN	#10 RING PN10-10R	#10 RING PN10-10R	35	GND
CB-A1 TB1-1	12	BLACK	FLAG DNFR14-250B	#10 RING PN10-10R	100	CB
CB-A2 TB1-2	12	RED	FLAG DNFR14-250B	#10 RING PN10-10R	99	
CB-B1 K1-L1	12	BLACK	FLAG DNFR14-250B	#10 RING PN10-10R	96	
CB-B2 K1-L2	12	RED	FLAG DNFR14-250B	#10 RING PN10-10R	97	
CH K1-L1	20	BLACK	BUTT SPLICE BSV14X	RING PN18-10R	74	CM
CH K1-L2	20	RED	BUTT SPLICE BSV14X	RING PN18-10R	75	
K1-T1 B1-C	12	BLACK	#10 RING PN10-10R	SOLDERFLAG	78	B1 START KIT
K1-T2 B1-R	12	RED	#10 RING PN10-10R	SOLDERFLAG	77	
C3-B B1-S	12	ORANGE	FLAG DNFR14-250B	SOLDERFLAG	62	
C3-A C4-A	12	RED	FLAG DNFR14-250B	FLAG DNFR14-250B	10	
C3-A K1-T2	12	RED	FLAG DNFR14-250B	RING PN18-10R	49	
R1-5 K1-T1	20	BLACK	FLAG DNFR18-250B	RING PN10-10R	50	
C3-B R1-2	12	ORANGE	FLAG DNFR14-250B	FLAG DNFR14-250B	9	
C4-B R1-1	12	BLACK	FLAG DNFR14-250B	FLAG DNFR14-250B	8	

Labels From To		Wire Size AWG	Wire Color	Type of End to End Connection		Length Of Wire	Remarks
K2-4	B2-BLK	FBO	BLACK	SPADE DNFR18-250F1B	MTR		B2
K1-L2	B2-WHITE	FBO	WHITE	SPADE SNFR18-250F1B	MTR		
B2-GRN	GNDE1	FBO	GREEN	--	MTR		
K1-T1	B3-BLK	FBO	BLACK	RING PN10-10R	MTR		B3
K1-T2	B3-WHT	FBO	WHITE	RING PN10-10R	MTR		
B3-GRN	GND E1	FBO	GREEN	---	MTR		
K3-4	TB3-1	12	BLACK	SPADE DNF10-250F1B	SPADE DNF10-250F1B	48	HEATER
K4-4	S3-1	12	BLACK	SPADE DNF10-250F1B	RING PN10-10R	57	
K5-4	S3-2	12	RED	SPADE DNF10-250F1B	RING PN10-10R	52	
S3-3	TB3-4	12	BLACK	RING PN10-10R	SPADE DNF10-250F1B	16	
S3-4	TB3-6	12	RED	RING PN10-10R	SPADE DNF10-250F1B	16	
TB3-3	TB3-6	12	RED	SPADE DNF10-250F1B	SPADE DNF10-250F1B	4	
HR1-1	TB3-1	FBO					
HR1-2	TB3-2	FBO					
HR2-1	TB3-1	FBO					
HR2-2	TB3-2	FBO					
HR3-1	TB3-2	FBO					
HR3-2	TB3-3	FBO					
HR4-1	TB3-2	FBO					
HR4-2	TB3-3	FBO					
HR5-1	TB3-4	FBO					
HR5-2	TB3-5	FBO					
HR6-1	TB3-4	FBO					
HR6-2	TB3-5	FBO					
HR7-1	TB3-5	FBO					
HR7-2	TB3-6	FBO					
HR8-1	TB3-5	FBO					
HR8-2	TB3-6	FBO					
TR-208VAC	K1-L1	20	BLACK	FLAG DNF18-250F1B	SPADE DNF18-250F1B	11	CONTROL BOX
TR-COMM	K1-L2	20	RED	FLAG DNF18-250F1B	SPADE DNF18-250F1B	12	

Labels From To		Wire Size AWG	Wire Color	Type of End to End Connection		Length Of Wire	Remarks
K2-2	K3-2	20	BLACK	SPADE DNF18-250F1B	PIGGY DV18-250P	15	
K3-2	K4-2	20	BLACK	SPADE DNF18-250F1B	PIGGY DV18-250P	3	
K4-2	K1-L1	20	BLACK	SPADE DNF18-250F1B	SPADE DNF18- 250F1B	3	
K5-2	K1-L2	20	RED	SPADE DNF18-250F1B	RING PN18-10R	4	
TR-24VAC	TB2-1	20	RED	FLAG DNFR18-250B	SPADE DNF18- 250F1B	15	
TR-24VAC(GND)	E2(GND)	20	BLACK	PIGGY DV18-250P	RING PN18-10R	9	
TB2-8	E2(GND)	20	BLACK	SPADE DNF18-250F1B	RING PN18-10R	11	
K2-1	TR-24 VAC (GND)	20	BLACK	PIGGY DV18-250P	SPADE DNF18- 250F1B	8	
K3-1	K2-1	20	BLACK	PIGGY DV18-250P	SPADE DNF18- 250F1B	15	
K4-1	K3-1	20	BLACK	PIGGY DV18-250P	SPADE DNF18- 250F1B	3	
K5-1	K4-1	20	BLACK	PIGGY DV18-250P	SPADE DNF18- 250F1B	3	
K1-B	K5-1	20	BLACK	FLAG DNFR18-250B	SPADE DNF18- 250F1B	8	
TD-1	TB2-6	20	RED	SPADE DNF18-250F1B	SPADE DNF18- 250F1B	11	
TD-3	K1-A	20	RED	SPADE DNF18-250F1B	FLAG DNFR18-250B	11	
K2-3	TB2-2	20	RED	SPADE DNF18-250F1B	SPADE DNF18- 250F1B	13	
K3-3	K4-3	20	RED	SPADE DNF18-250F1B	PIGGY DV18-250P	3	
K4-3	K5-3	20	RED	SPADE DNF18-250F1B	PIGGY DV18-250P	3	
K5-3	TB2-4	20	RED	SPADE DNF18-250F1B	SPADE DNF18- 250F1B	6	
S4-1 (LOW)	TB2-5	20	BLUE	FLAG DNFR18-250B	SPADE DNF18- 250F1B	35	

Table 2. Wire List for S9160-18KH-3 Unit

Labels From To		Wire Size AWG	Wire Color	Type of End to End Connection		Length Of Wire	Remarks
J1-A	TB1-4	12	BLACK	SOLDER	#10 RING PN10-10R	97	J1
J1-B	TB1-5	12	RED	SOLDER	#10 RING PN10-10R	96	
J1-C	TB1-6	12	BLUE	SOLDER	#10 RING PN10-10R	95	
J1-E	CASE GND (E1)	12	GREEN	SOLDER	#10 RING PN10-10R	70	
J1-D	NOT USED	--	--	PIN ONLY			
J2-A	TB1-1	12	BLACK	SOLDER	#10 RING PN10-10R	16	J2
J2-B	TB1-2	12	RED	SOLDER	#10 RING PN10-10R	15	
J2-C	TB1-3	12	BLUE	SOLDER	#10 RING PN10-10R	14	
J2-E	GND (E2)	12	GREEN	SOLDER	#10 RING PN10-10R	7	
J2-D	NOT USED	--	--	PIN ONLY		7	
CASE GND (E1)	GND (E2)	12	GREEN	#10 RING PN10-10R	#10 RING PN10-10R	35	
CB-A1	TB1-1	12	BLACK	FLAG DNFR14-250B	#10 RING PN10-10R	100	CB
CB-A2	TB1-2	12	RED	FLAG DNFR14-250B	#10 RING PN10-10R	99	
CB-A3	TB1-3	12	BLUE	FLAG DNFR14-250B	#10 RING PN10-10R	98	
CB-B1	K1-L1	12	BLACK	FLAG DNFR14-250B	#10 RING PN10-10R	96	
CB-B2	K1-L2	12	RED	FLAG DNFR14-250B	#10 RING PN10-10R	97	
CB-B3	K1-L3	12	BLUE	FLAG DNFR14-250B	#10 RING PN10-10R	98	
CH	K1-L1	20	BLACK	BUTT SPLICE BSV14X	RING PN18-10R	74	CH
CH	K1-L2	20	RED	BUTT SPLICE BSV14X	RING PN18-10R	75	
K1-T1	B1-T1	12	BLACK	#10 RING PN10-10R	SOLDER FLAG	78	B1
K1-T2	B1-T2	12	RED	#10 RING PN10-10R	SOLDER FLAG	77	
K1-T3	B1-T3	12	BLUE	#10 RING PN10-10R	SOLDER FLAG	82	
K2-4	B2-BLK	FBO		SPADE DNF18-250F1B	MTR		B2
K1-L2	B2-WHT	FBO		SPADE DNF18-250F1B	MTR		

Labels From To		Wire Size AWG	Wire Color	Type of End to End Connection		Length Of Wire	Remarks
B2-GRN	GND (E1)	FBO		---	MTR		
K1-T2	B3-BLK	FBO		RING PN10-10R	MTR		B3
K1-T3	B3-WHT	FBO		RING PN10-10R	MTR		
B3-GRN	GND E1	FBO		---	MTR		
HR1-1	TB3-1	FBO					HEATER
HR1-2	TB3-6	FBO					
HR2-1	TB3-1	FBO					
HR2-2	TB3-2	FBO					
HR3-1	TB3-1	FBO					
HR3-2	TB3-2	FBO					
HR4-1	TB3-3	FBO					
HR4-2	TB3-2	FBO					
HR5-1	TB3-3	FBO					
HR5-2	TB3-4	FBO					
HR6-1	TB3-5	FBO					
HR6-2	TB3-4	FBO					
HR7-1	TB3-5	FBO					
HR7-2	TB3-4	FBO					
HR8-1	TB3-5	FBO					
HR8-2	TB3-6	FBO					
TB3-2	TB3-4	12	BLACK	SPADE DNF10-250F1B	SPADE DNF10-250F1B	4	
K3-4	TB3-1	12	BLACK	SPADE DNF10-250F1B	SPADE DNF10-250F1B	78	
K4-4	S3-1	12	RED	SPADE DNF10-250F1B	RING PN10-10R	57	
K5-4	S3-2	12	BLUE	SPADE DNF10-250F1B	RING PN10-10R	52	
S3-3	TB3-3	12	RED	RING PN10-10R	SPADE DNF10-250F1B	16	
S3-4	TB3-5	12	BLUE	RING PN10-10R	SPADE DNF10-250F1B	16	
TD-1	TB2-6	20	RED	SPADE DNF18-250F1B	SPADE DNF18-250F1B	11	CONTROL BOX
TD-3	K1-A	20	RED	SPADE DNF18-250F1B	FLAG DNFR18-250B	11	
TR-208VAC	L1-L1	20	BLACK	FLAG DNFR18-250B	RING PN18-10R	11	CONTROL BOX
TR-COMM	K1-L2	20	RED	FLAG DNFR18-250B	RING PN18-10R	12	
K2-2	K1-L1	20	BLACK	SPADE DNF18-250F1B	SPADE DNF18-	15	

Labels From To		Wire Size AWG	Wire Color	Type of End to End Connection		Length Of Wire	Remarks
					250F1B		
K3-2	K1-L1	20	BLACK	SPADE DNF18-250F1B	SPADE DNF18-250F1B	4	
K4-2	K1-L2	20	RED	SPADE DNF18-250F1B	SPADE DNF18-250F1B	3	
K5-2	K1-L3	20	BLUE	SPADE DNF18-250F1B	SPADE DNF18-250F1B	6	
TR-24VAC	TB2-1	20	RED	FLAG DNFR18-250B	SPADE DNF18-250F1B	15	
TR-24VAC(GND)	E2(GND)	20	BLACK	PIGGY DNFR18-250B	RING PN18-10R	9	
TB2-8	E2(GND)	20	BLACK	SPADE DNF18-250F1B	RING PN18-10R	11	
K2-1	TR-24 VAC (GND)	20	BLACK	PIGGY DV18-250P	SPADE DNF18-250F1B	8	
K3-1	K2-1	20	BLACK	PIGGY DV18-250P	SPADE DNF18-250F1B	15	
K4-1	K3-1	20	BLACK	PIGGY DV18-250P	SPADE DNF18-250F1B	3	
K5-1	K4-1	20	BLACK	PIGGY DV18-250P	SPADE DNF18-250F1B	3	
K1-B	K5-1	20	BLACK	FLAG DNFR18-250B	SPADE DNF18-250F1B	8	
K2-3	TB2-2	20	RED	SPADE DNF18-250F1B	SPADE DNF18-250F1B	13	
K3-3	K4-3	20	RED	SPADE DNF18-250F1B	PIGGY DV18-250P	3	
K4-3	K5-3	20	RED	SPADE DNF18-250F1B	PIGGY DV18-250P	3	
K5-3	TB2-4	20	RED	SPADE DNF18-250F1B	SPADE DNF18-250F1B	6	
S4-1 (LOW)	TB2-5	20	BLUE	FLAG DNFR18-250B	SPADE DNF18-250F1B	35	
S5-2 (HIGH)	TB2-6	20	RED	FLAG DNFR18-250B	SPADE DNF18-250F1B	35	
S4-2 (LOW)	S5-1 (HIGH)	20	BLACK	FLAG DNFR18-250B	FLAG DNFR18-250B	10	

Labels From To		Wire Size AWG	Wire Color	Type of End to End Connection		Length Of Wire	Remarks
L1	CASE (GND)E1	20	BLACK	SPADE DNF18-250F1B	RING PN18-10R	58	L1
L1	TB2-7	20	RED	SPADE DNF18-250F1B	SPADE DNF18-250F1B	88	
P3-2	GND(E3)	20	BLACK	PIN	RING PN18-10R	6	RCB
P3-3	S1A-A	20	BLACK	PIN	SOLDER	6	
P3-5	S1B-D	20	RED	PIN	SOLDER	6	
P3-6	S1C-F	20	BLUE	PIN	SOLDER	6	
P3-7	S1A-B	20	BLACK	PIN	SOLDER	6	
P3-8	S1B-E	20	RED	PIN	SOLDER	6	
S1A-B	S1C-C	20	BLUE	SOLDER	SOLDER	6	
P3-1	POT	FBO	--	PIN	--	--	
P3-12	POT	FBO	--	PIN	--	--	
LP	S1A-A	FBO	--	--	SOLDER	--	
LP	GND(E3)	FBO	--	--	RING PN18-10R	--	
J3-1	POT	20	BLUE	PIN	FLAG DNFR18-250B	36	BLACK BOX
J3-2	TB2-8	20	BLACK	PIN	SPADE DNF18-250F1B	16	
J3-3	TB2-1	20	RED	PIN	SPADE DNF18-250F1B	21	
J3-5	NC	20	RED	PIN	NON INSUL DV18-250B	36	
J3-6	TB2-5	20	RED	PIN	SPADE DNF18-250F1B	17	
J3-7	TB2-2	20	RED	PIN	SPADE DNF18-250F1B	19	
J3-8	TB2-4	20	RED	PIN	SPADE DNF18-250F1B	17	
J3-12	POT	20	BLUE	PIN	FLAG DNFR18-250B	36	
S2-NO	TB2-7	20	RED	NON INSUL DV18-250B	SPADE DNF18-250F1B	39	
S2 24VAC(GND)	TB2-8	20	BLACK	FLAG DNFR18-250B	SPADE DNF18-250F1B	38	

Labels From To	Wire Size AWG	Wire Color	Type of End to End Connection		Length Of Wire	Remarks
S2-COMM(2W) TB2-2	20	RED	*FLAG DNFR14-250B	SPADE DNF18- 250F1B	43	
S2-COMM(2W) S2-24VAC	20	RED	*FLAG DNFR14-250B	NON INSUL DV18- 250B	3	
S2-PROBE BULB/SENSOR	FBO	--	FLAG DNFR18-250B	--	--	

*Crimp end same flag

(1) ITEM NO.	(2) SMR CODE	(3) NSN	(4) CAGEC	(5) PART NUMBER	(6) DESCRIPTION AND USABLE ON CODE (UOC)	(7) QTY
GROUP 08 GENERAL USE STANDARDIZED PARTS						
GROUP 0801 BULK MATERIAL						
1	XBOZZ		81349	ZZ-T-831	. TUBE, PLASTIC, 0.500 I.D..... X 0.750 O.D., CLEAR, TYPE VIII, CLASS 8, CUT TO LENGTH	3 ft
2	XBFZZ	4710-00-203-3171	81327	6-1-5853-11	. TUBE, METALLIC..... .250 OD, CUT TO LENGTH	AR
3	XBFZZ	4710-00-277-4532	39428	5174K5	. TUBE, METALLIC..... .375 OD, CUT TO LENGTH	AR
4	XBFZZ		39428	5174K6	. TUBE, METALLIC..... .500 OD, CUT TO LENGTH	AR
5	XBFZZ		39428	5174K12	. TUBE, METALLIC..... .875 OD, CUT TO LENGTH	AR
6	XBOZZ		81349	M5086/2-12-0	. WIRE, ELECTRICAL, BLACK	AR
7	XBOZZ	6145-01-087-1271	81349	M5086/2-12-2	. WIRE, ELECTRICAL, RED.....	AR
8	XBOZZ		81349	M5086/2-12-6	. WIRE, ELECTRICAL, BLUE	AR
9	XBOZZ		81349	M5086/2-12-5	. WIRE, ELECTRICAL, GREEN	AR
10	XBOZZ		81349	M5086/2-12-3	. WIRE, ELECTRICAL, ORANGE....	AR
11	XBOZZ	6145-00-578-7514	81349	M5086/2-12-9	. WIRE, ELECTRICAL, WHITE.....	AR
12	XBOZZ	5940-00-143-4794	81343	MS25036-112	. TERMINAL, LUG, BARREL..... NON-INSULATED, #10 RING UOC: 83J	18
13	XBOZZ	5940-00-143-4794	81343	MS25036-112	. TERMINAL, LUG, BARREL..... NON-INSULATED, #10 RING UOC: 83K	25
14	PAOZZ	5940-00-467-1236	06383	DNFR14-250B	. TERMINAL, LUG, (fits spade terminal) UOC: 83J	21
15	PAOZZ	5940-01-442-2433	06383	BSV14X	. SPLICE, CONNECTOR UOC: 83J	4
16	PAOZZ	5940-00-143-4771	81343	MS25036-103	. TERMINAL, LUG, BARREL..... NON-INSULATED, RING UOC: 83J	9
17	PAOZZ	5940-00-143-4771	81343	MS25036-103	. TERMINAL, LUG, BARREL..... NON-INSULATED, RING UOC: 83K	9
18	PAOZZ		06383	DNF10-250FIB	. SPADE, QUICK DISCONNECT, FEMALE, INSULATED UOC: 83J	8
19	PAOZZ		06383	DNF10-250FIB	. SPADE, QUICK DISCONNECT, FEMALE, INSULATED UOC: 83K	8
20	PAOZZ		06383	DNF18-250FIB	. SPADE, QUICK DISCONNECT, FEMALE, INSULATED UOC: 83J	39
21	PAOZZ		06383	DNF18-250FIB	. SPADE, QUICK DISCONNECT, FEMALE, INSULATED UOC: 83K	38

(1) ITEM NO.	(2) SMR CODE	(3) NSN	(4) CAGEC	(5) PART NUMBER	(6) DESCRIPTION AND USABLE ON CODE (UOC)	(7) QTY
22	PAOZZ		06383	DV18-250P	. TERMINAL, LUG, PIGGY, QUICK DISCONNECT, INSULATED, UOC: 83J	9
23	PAOZZ		06383	DV18-250P	.TERMINAL, LUG, PIGGY, QUICK DISCONNECT, INSULATED, UOC: 83K	7
24	PAOZZ		06383	DNFR18-250FIB	. TERMINAL, LUG WIRE NO..... 22-18, RED, FLAG PUSH-ON (fits spade terminal) UOC: 83J	12
25	PAOZZ		06383	DNFR18-250FIB	. TERMINAL, LUG WIRE NO..... 22-18, RED, FLAG PUSH-ON (fits spade terminal) UOC: 83K	18

END OF FIGURE

**OPERATOR'S, UNIT, DIRECT SUPPORT,
AND GENERAL SUPPORT MAINTENANCE
AIR CONDITIONER, HORIZONTAL COMPACT,
18,000 BTU/HR
230 VOLT, 1 PHASE, 50/60 HERTZ,
ENVIRONMENTAL SYSTEMS S9150-18KH-1
NSN 4120-01-523-4131 (EIC N/A)**

**AIR CONDITIONER, HORIZONTAL COMPACT,
18,000 BTU/HR
208 VOLT, 3 PHASE, 50/60 HERTZ,
ENVIRONMENTAL SYSTEMS S9160-18KH-3
NSN 4120-01-523-4472 (EIC N/A)
NATIONAL STOCK NUMBER INDEX**

STOCK NUMBER	FIG.	ITEM	STOCK NUMBER	FIG.	ITEM
3110-01-028-6816	3	13	4730-01-327-8615	5	4
3110-01-028-6817	3	12	4730-01-328-6117	18	12
4120-01-523-4131	1	2	4730-01-328-6117	20	12
4120-01-523-4472	1	1	4810-01-542-0706	15	5
4130-00-050-0267	15	4	4820-00-845-4168	16	13
4130-00-479-2744	19	5	4820-01-012-6437	16	9
4130-01-503-5553	18	4	4820-01-542-1558	15	3
4130-01-541-9457	4	8	5225-01-147-6728	12	11
4130-01-541-9470	4	10	5305-00-051-2353	7	24
4130-01-541-9500	4	2	5305-00-052-2246	10	26
4130-01-542-1191	17	5	5305-00-053-8550	2	12
4130-01-542-2101	4	7	5305-00-063-3503	12	12
4140-01-541-9421	10	22	5305-00-067-9846	10	18
4520-01-542-2078	8	1	5305-00-067-9849	10	17
4540-00-444-7114	11	9	5305-00-068-0516	7	33
4710-00-203-3171	BULK	2	5305-00-068-0516	12	3
4710-00-277-4532	BULK	3	5305-00-177-5546	12	2
4710-00-277-5529	20	3	5305-00-225-3839	12	8
4730-00-189-2737	16	10	5305-00-724-5812	10	21
4730-00-203-7093	20	11	5305-00-889-2997	8	5
4730-00-254-6447	18	11	5305-00-948-6194	6	15
4730-00-254-6447	20	9	5305-00-954-4743	7	20
4730-00-257-2163	20	5	5305-00-957-7821	6	17
4730-00-277-7922	20	8	5305-00-958-0671	6	16
4730-00-263-6463	20	10	5305-00-958-5474	8	21
4730-00-289-4221	20	18	5305-00-958-6373	2	12
4730-00-471-5663	20	14	5305-00-958-6381	8	2
4730-00-722-2381	19	14	5305-00-959-6647	3	11
4730-00-782-5138	20	13	5305-00-978-9348	16	1
4730-00-813-3194	20	16	5305-00-984-4984	9	9
4730-00-815-5672	20	7	5305-00-984-4992	7	9
4730-00-818-7778	20	6	5305-00-984-6191	19	9
4730-00-822-1274	20	17	5305-00-984-6193	12	14
4730-01-037-4919	16	11	5305-00-984-6194	2	14

STOCK NUMBER	FIG.	ITEM	STOCK NUMBER	FIG.	ITEM
5305-00-984-6194	7	6	5310-00-857-4957	9	5
5305-00-984-6194	10	1	5310-00-877-5795	10	27
5305-00-984-6194	11	21	5310-00-921-2366	12	15
5305-00-984-6194	14	9	5310-00-934-9738	8	11
5305-00-984-6194	15	8	5310-00-950-1310	8	7
5305-00-984-6194	16	5	5310-00-959-1488	12	6
5305-00-984-6195	2	13	5310-00-997-1888	19	4
5305-00-984-6197	4	4	5310-01-044-2274	8	14
5305-00-984-6198	17	6	5310-01-055-8419	15	15
5305-00-988-1167	8	15	5305-01-147-6728	12	11
5305-00-993-1848	10	10	5305-01-541-4574	7	13
5305-00-993-1848	19	1	5310-01-155-1895	19	17
5305-00-993-1848	19	6	5310-00-177-0994	18	3
5310-00-045-3296	10	11	5310-00-754-4406	7	21
5310-00-045-3296	15	9	5310-00-934-9738	8	11
5310-00-045-3296	19	2	5310-00-959-1488	12	6
5310-00-045-3296	19	7	5310-01-155-1895	19	17
5310-00-045-3299	2	15	5310-01-186-3484	6	4
5310-00-045-3299	4	5	5310-01-186-3484	6	8
5310-00-045-3299	7	7	5310-01-323-7090	11	3
5310-00-045-3299	10	2	5310-01-323-7090	17	9
5310-00-045-3299	11	23	5310-01-335-4894	10	8
5310-00-045-3299	14	10	5310-01-542-0666	13	1
5310-00-045-3299	16	6	5315-00-815-1405	3	10
5310-00-045-3299	17	7	5315-00-839-2325	6	5
5310-00-045-4007	16	2	5320-00-117-6938	10	9
5310-00-081-4219	10	18	5320-00-117-6938	10	15
5310-00-081-4219	12	7	5320-00-119-6754	2	18
5310-00-081-8087	7	18	5320-00-119-6754	19	15
5310-00-087-0057	8	16	5320-00-879-6606	3	5
5310-00-088-0553	10	19	5320-01-295-9924	10	25
5310-00-088-1251	8	4	5325-00-142-9959	3	8
5310-00-177-0994	18	3	5325-00-171-6387	20	15
5310-00-250-9477	11	10	5325-00-174-5317	11	19
5310-00-537-3881	10	13	5325-00-185-0012	7	25
5310-00-543-2410	8	6	5340-00-286-9127	16	12
5310-00-543-5060	8	17	5340-00-286-9424	7	38
5310-00-562-2816	19	11	5340-00-291-5322	10	28
5310-00-582-5965	10	6	5340-00-598-0146	6	13
5310-00-582-5965	19	12	5340-00-598-0146	16	7
5310-00-596-9441	7	34	5340-00-685-0508	15	3
5310-00-616-2589	11	8	5342-01-042-5759	13	4
5310-00-616-2589	11	17	5355-00-556-0145	8	8
5310-00-754-4406	7	21	5365-01-541-7683	15	12
5310-00-809-4058	7	35	5910-01-466-9981	14	6
5310-00-809-4058	8	3	5910-01-466-9982	14	4
5310-00-809-4058	12	4	5930-00-190-8729	16	3
5310-00-811-3494	6	14	5930-00-190-8730	16	4
5310-00-811-3494	7	14	5930-01-466-6331	8	9
5310-00-811-3494	7	30	5935-00-490-3743	7	19
5310-00-811-3494	8	23	5935-01-176-1708	7	16
5310-00-820-6653	8	22	5935-01-176-1708	9	7
5310-00-821-2366	2	16	5935-01-466-8138	16	8

STOCK NUMBER	FIG.	ITEM
5935-01-509-1003	7	15
5935-01-509-1003	9	6
5935-01-534-7863	BULK	20
5940-00-143-4771	BULK	16
5940-00-143-4794	BULK	12
5940-00-143-4794	BULK	12
5940-01-201-7221	7	13
5940-01-442-2433	BULK	15
5940-00-467-1236	BULK	14
5940-01-542-3101	7	22
5940-01-983-6144	11	14
5945-01-466-8133	14	7
5945-01-503-6233	7	26
5945-01-542-1736	7	5
5950-01-542-0669	15	6
5970-00-814-2878	7	17
5970-00-814-2878	8	20
5970-00-814-2878	9	8
5980-01-542-0011	8	24
6105-01-541-9888	10	21
6105-01-541-9895	12	9
6145-01-087-1271	BULK	7
6145-00-578-7514	BULK	11
9905-01-142-3106	11	15
9905-01-648-0495	7	11

**OPERATOR'S, UNIT, DIRECT SUPPORT,
AND GENERAL SUPPORT MAINTENANCE
AIR CONDITIONER, HORIZONTAL COMPACT,
18,000 BTU/HR
230 VOLT, 1 PHASE, 50/60 HERTZ,
ENVIRONMENTAL SYSTEMS S9150-18KH-1
NSN 4120-01-523-4131 (EIC N/A)**

**AIR CONDITIONER, HORIZONTAL COMPACT,
18,000 BTU/HR
208 VOLT, 3 PHASE, 50/60 HERTZ,
ENVIRONMENTAL SYSTEMS S9160-18KH-3
NSN 4120-01-523-4472 (EIC N/A)
PART NUMBER INDEX**

PART NUMBER	FIG.	ITEM	PART NUMBER	FIG.	ITEM
ABS44	16	15	DNF18-250FIB	BULK	21
AD-42H	10	25	DNFR14-250B	BULK	14
AH4101	8	10	DNFR18-250FIB	BULK	24
APT07838AST-ME84TESTME- THOD	18	13	DNFR18-250FIB	BULK	25
ASTM-B280X.250OD	18	9	DV18-250P	BULK	22
ASTM-B280X.250OD	20	1	DV18-250P	BULK	23
ASTM-B280X.375OD	18	8	HCC-3XQ02CY	7	5
ASTM-B280X.375OD	20	2	HCR51ZQ1AB	7	8
ASTM-B280X.500OD	20	3	HCT-09E0BB06	7	29
ASTM-B280X.875OD	18	10	HMPS24A9X60	7	26
ASTM-B280X.875OD	20	4	HNE3W100-12A	18	5
AS21919WDG-14	7	38	J5134-010166BA	16	10
AS21919WDG12	16	12	J5134-4010104BA	16	11
AS21919WDG3	10	28	M23053/5-106-9	7	17
AS21919WDG34	17	13	M23053/5-106-9	8	20
AS21919WDG37	15	3	M23053/5-106-9	9	8
AS21919WDG6	6	13	M24308-4-2	7	19
AS21919WDG6	15	19	M45913/1-4CG5C	8	4
AS21919WDG6	16	7	M45913/2-6FG5C	12	6
AV46	16	9	M45938/1-5	8	14
A3431	20	21	M5086/2-12-0	BULK	6
B1821BH025F113N	7	34	M5086/2-12-2	BULK	7
B1821BH025F113N	12	3	M5086/2-12-3	BULK	10
BSV14X	BULK	15	M5086/2-12-5	BULK	9
C-053-S	15	4	M5086/2-12-6	BULK	8
C1113/42	9	12	M5086/2-12-9	BULK	11
C1113/43	9	13	MS1044N08	17	12
C4D0304N-9833	8	9	MS16535-154	3	5
CR28K6-PFV-270	13	8	MS16997-20	16	1
CR28K6-TF5-270	13	7	MS18065-20	12	11
DNF10-250FIB	BULK	18	MS20426AD3-4	10	9
DNF10-250FIB	BULK	19	MS20426AD3-4	10	16
DNF18-250FIB	BULK	20	MS20470AD2-3	2	18
			MS20470AD2-3	19	15

PART NUMBER	FIG.	ITEM	PART NUMBER	FIG.	ITEM
MS21044-N08	15	2	MS35206-215	8	5
MS21044-N08	15	17	MS35206-227	9	9
MS21044D6	9	5	MS35206-232	7	9
MS21044N06	7	18	MS35206-232	9	4
MS21044N08	6	14	MS35206-243	19	9
MS21044N08	7	14	MS35206-246	2	14
MS21044N08	7	30	MS35206-246	4	6
MS21044N08	10	27	MS35206-246	6	15
MS21044N5	10	19	MS35206-246	7	6
MS21044N8	8	23	MS35206-246	10	1
MS21075-L4N	10	8	MS35206-246	11	21
MS24665-132	6	5	MS35206-246	12	14
MS24665-151	3	10	MS35206-246	14	9
MS24693-S118	10	17	MS35206-246	15	8
MS24693-S248	7	13	MS35206-246	16	5
MS24693-S251	7	27	MS35206-246	18	1
MS24693-S299	10	26	MS35206-246	20	15
MS24693-S46	3	11	MS35206-247	2	13
MS24693-S5	7	20	MS35206-247	11	22
MS24693-S51	2	12	MS35206-247	17	2
MS24693-S51	7	4	MS35206-249	4	4
MS24693-S51	9	1	MS35206-250	17	6
MS24693-S51	12	12	MS35206-251	11	25
MS24693-S54	6	17	MS35206-251	11	25
MS24693-S55	7	24	MS35207-265	10	10
MS24693-S55	15	1	MS35207-265	19	1
MS24693-S55	17	11	MS35207-265	19	6
MS24693-S60	15	16	MS35207-274	6	16
MS25036-103	BULK	16	MS35335-33	7	34
MS25036-112	BULK	17	MS35338-39	8	17
MS25036-112	BULK	12	MS35338-40	7	10
MS25036-112	BULK	13	MS35338-40	8	6
MS25043-22DA	7	16	MS35338-41	16	2
MS25043-22DA	9	7	MS35338-42	2	15
MS27130-S13K	11	3	MS35338-42	4	5
MS27130-S13K	17	9	MS35338-42	7	7
MS27130-S25K	15	15	MS35338-42	10	2
MS27130-S26K	6	4	MS35338-42	11	23
MS27130-S26K	6	8	MS35338-42	12	15
MS27130-S32K	7	36	MS35338-42	14	10
MS27183-10	7	35	MS35338-42	16	6
MS27183-10	8	3	MS35338-42	17	3
MS27183-10	12	4	MS35338-42	17	7
MS27183-12	10	18	MS35338-42	18	2
MS27183-12	12	7	MS35338-43	10	11
MS27183-2	8	16	MS35338-43	15	9
MS27183-4	8	7	MS35338-43	19	2
MS34338-50	8	22	MS35338-43	19	7
MS35190-250	8	21	MS35338-44	10	6
MS35206-204	8	15	MS35338-44	19	12
MS35206-208	8	2	MS35489-146	11	18

PART NUMBER	FIG.	ITEM	PART NUMBER	FIG.	ITEM
MS35338-44	19	12	S9160-6163-3	17	1
MS35489-146	11	18	S9160-6174	15	13
MS35489-35	7	25	S9160-6250	1	3
MS35489-4	11	19	S9160-6358	12	16
MS35489-51	20	15	S9160-6360	10	24
MS35649-222	8	11	S9160-6701	2	1
MS35649-2252	19	4	S9160-8886-1	2	11
MS35649-2254	11	10	S9160-8886-1	3	1
MS35917-7	18	11	S9160-9156-1	8	1
MS35917-7	20	9	S9160-9334	12	9
MS35928-2	20	13	S9160-9355	12	10
MS35928-7	18	12	S9160-9406	17	5
MS35928-7	20	12	S9160-9909	12	5
MS35929-2	20	5	S9160-9922	11	2
MS51964-118	12	2	S9160-9923	7	3
MS51964-65	10	21	S9160-9926	17	8
MS602-8	11	15	S9160-9927	10	14
MS90725-8	12	8	S9160-9928	10	16
MS91528-1K2B	8	8	S9160-9929	10	12
NAS1330SRE271	18	3	S9160-9930	10	7
NAS1330H3K116L	10	13	S9160-9931	10	3
NAS1330S08K106	11	8	S9160-9932	9	2
NAS1330S08K106	11	17	S9160-9933	4	3
P85E72	14	6	S9160-9935	14	8
P8EUBB	5	3	S9160-9937	14	3
P8TUBB	5	4	S9160-9938	14	5
PM151D5-24V/13	8	24	S9160-9939	10	23
RR2-B0-24-630-181-C	9	10	S9160-9940	14	2
RR3-B0-24-625-181-C	9	11	S9160-9941-1	2	2
S200-RB-313	15	5	S9160-9943	2	17
S20490L22-12	11	1	S9160-9944	2	8
S6S130-24VAC	15	6	S9160-9945	15	11
S9150-18KH-1	1	2	S9160-9946	19	8
S9150-18KWH-1	7	31	S9160-9947	2	6
S9150-4258	11	4	S9160-9948	2	7
S9150-9932	9	3	S9160-9949	2	9
S9150-JBA-1	7	1	S9160-9950	19	13
S9150-STKIT	14	1	S9160-9951	15	14
S9160-1-1147	4	9	S9160-9952	3	3
S9160-1-1147-1	4	10	S9160-9953	19	3
S9160-13-22	6	9	S9160-9955	2	10
S9160-13-22	21	10	S9160-9956-1	3	2
S9160-18KH-3	1	1	S9160-9956-13	3	4
S9160-18KWH-3	7	34	S9160-9956-3	3	6
S9160-3-4	2	3	S9160-9956-4	3	7
S9160-4258	11	5	S9160-9956-7	3	9
S9160-6028	19	16	S9160-9960	12	13
S9160-6079-1	4	1	S9160-9966	11	16
S9160-6081-1	4	7	S9160-9967	11	6
S9160-6081-2	4	8	S9160-9968	11	7
S9160-6094-1	6	1	S9160-9969	6	7
S9160-6142	12	1	S9160-9976-1	2	5
S9160-6155	17	10	S9160-9979	8	12

PART NUMBER	FIG.	ITEM	PART NUMBER	FIG.	ITEM
S9160-9985	13	2	13216E6124/IW	11	13
S9160-EFA-1	10	4	13216E6176-5	20	11
S9160-JBA-3	7	2	13216E6215-1	16	4
S9160-TCD	5	1	13216E6215-3	16	3
S9160-TLR-135	10	21	13216E6221-1	7	11
S9500- E9950	15	10	13216E6330	19	5
S9500-3/8/16LK	13	1	13216E66122	11	20
S9500-4190/16	8	19	1321E3469	17	4
S9500-4274	8	18	1321E3469	19	10
S9500-6345-1	18	6	13225E8453	13	4
S9500-6670	7	36	3585-2CN-0246	3	8
S9500-6701/77	21	1	38-T067-F4583	14	7
S9500-6701/79	21	4	3CY1205R	18	4
S9500-6701/80	21	3	5174K12	BULK	5
S9500-6701/81	21	2	5174K5	BULK	3
S9500-6701/82	21	6	5174K6	BULK	4
S9500-6701/83	21	8	5221	16	13
S9500-6701/84	21	7	42TBB	11	14
S9 S9500-6701/86	21	9	6-1-5853-11	BULK	2
S9500-8165-1	13	5	600GP-6	7	22
S9500-8165-2	13	6	606GP-MS6	7	23
S9500-8165-3	13	3	75-190024-79P	7	15
S9500-9944	16	16	75-190024-79P	9	6
S9500-9968	6	12	85PS330-D14	14	4
S9500-E9924	8	13	899JJ12K48,53	7	12
S9500-E9941-2	2	4	90295A140	19	11
S9500-E9968	6	3	91113A3032	11	11
S9500-E9970	6	6	9160-6140	10	20
S9500-T	6	11	91841A005	7	21
S9500-THEQ	15	7	92320A530	15	18
S9540	16	8	923510A311	15	12
S9600-6327	6	2	94613A542	10	5
S9600-CH	6	10	94807A029	19	17
W-1206	19	14	98017A205	11	12
W-40324	20	6			
W-40363	20	7			
W02305	18	7			
W1206	16	14			
W1706	20	20			
W2312	20	8			
W2716	20	14			
W2828	20	19			
W4003	20	10			
ZZ-T-831	5	2			
13214E3469	2	16			
13214E3469	7	30			
13216E3469	11	24			
13216E6078-1	4	2			
13216E6103-1	3	12			
13216E6103-2	3	13			
13216E6124-1	11	9			

**OPERATOR'S, UNIT, DIRECT SUPPORT,
AND GENERAL SUPPORT MAINTENANCE
AIR CONDITIONER, HORIZONTAL COMPACT,
18,000 BTU/HR
230 VOLT, 1 PHASE, 50/60 HERTZ,
ENVIRONMENTAL SYSTEMS S9150-18KH-1
NSN 4120-01-523-4131 (EIC N/A)**

**AIR CONDITIONER, HORIZONTAL COMPACT,
18,000 BTU/HR
208 VOLT, 3 PHASE, 50/60 HERTZ,
ENVIRONMENTAL SYSTEMS S9160-18KH-3
NSN 4120-01-523-4472 (EIC N/A)
REFERENCE DESIGNATOR INDEX**

**REFERENCE
DESIGNATOR**

FIG.

ITEM

**REFERENCE
DESIGNATOR**

FIG.

ITEM

CB1	9	10
CB2	9	11
C3	14	4
C4	14	6
J1	7	15
J2	9	6
J3	7	19
K1	7	5
K2	7	8
K3	7	8
K4	7	8
K5	7	8
L1	15	6
LP	8	24
S1	8	9
S2	8	10
S3	11	1
S4	16	4
S5	16	3
TB1	7	22
TB2	7	12
TB3	11	14
TD	7	26
TR	7	29

RECOMMENDED CHANGES TO PUBLICATIONS AND BLANK FORMS For use of this form, see AR 25-30; the proponent agency is ODISC4.						Use Part II (reverse) for Repair Parts and Special Tool Lists (RPSTL) and Supply Catalogs/Supply Manuals (SC/SM)	DATE 8/30/02
TO: (Forward to proponent of publication or form)(Include ZIP Code) Commander, U.S. Army C-E LCMC ATTN: AMSEL-LC-LEO-E-ED-P FORT MONMOUTH, NJ 07703-5000						FROM: (Activity and location)(Include ZIP Code) MSG, Jane Q. Doe 1234 Any Street Nowhere Town, AL 34565	
PART 1 - ALL PUBLICATIONS (EXCEPT RPSTL AND SC/SM) AND BLANK FORMS							
PUBLICATION/FORM NUMBER TM 11-4940-355-12						DATE 16 Sep 2002	TITLE Organizational, Direct Support, And General Support Maintenance Manual for Machine Gun, .50 Caliber M3P and M3P Machine Gun Electrical Test Set Used On Avenger Air Defense Weapon System
ITEM NO.	PAGE NO.	PARA-GRAPH	LINE NO. *	FIGURE NO.	TABLE NO.	RECOMMENDED CHANGES AND REASON	
1	WP0005 PG 3		2			Test or Corrective Action column should identify a different WP number.	
EXAMPLE							
<i>* Reference to line numbers within the paragraph or subparagraph.</i>							
TYPED NAME, GRADE OR TITLE MSG, Jane Q. Doe, SFC						TELEPHONE EXCHANGE/AUTOVON, PLUS EXTENSION 788-1234	SIGNATURE

TO: (Forward direct to addressee listed in publication) Commander, U.S. Army C-E LCMC ATTN: AMSEL-LC-LEO-E-ED-P FORT MONMOUTH, NJ 07703-5000	FROM: (Activity and location) (Include ZIP Code) MSG, Jane Q. Doe 1234 Any Street Nowhere Town, AL 34565	DATE 8/30/02
--	--	------------------------

PART II - REPAIR PARTS AND SPECIAL TOOL LISTS AND SUPPLY CATALOGS/SUPPLY MANUALS

PUBLICATION NUMBER			DATE	TITLE				
PAGE NO.	COLM NO.	LINE NO.	NATIONAL STOCK NUMBER	REFERENCE NO.	FIGURE NO.	ITEM NO.	TOTAL NO. OF MAJOR ITEMS SUPPORTED	RECOMMENDED ACTION

PART III - REMARKS (Any general remarks, corrections, or suggestions for improvement of publications and blank forms. Additional blank sheets may be used if more space is needed.)

EXAMPLE

TYPED NAME, GRADE OR TITLE MSG, Jane Q. Doe, SFC	TELEPHONE EXCHANGE/AUTOVON, PLUS EXTENSION 788-1234	SIGNATURE
---	--	-----------

RECOMMENDED CHANGES TO PUBLICATIONS AND BLANK FORMS						Use Part II (<i>reverse</i>) for Repair Parts and Special Tool Lists (RPSTL) and Supply Catalogs/Supply Manuals (SC/SM).	DATE
For use of this form, see AR 310-1; the proponent agency is the US Army Adjutant General Center.							
TO: (<i>Forward to proponent of publication or form</i>) (<i>Include ZIP Code</i>)						FROM: (<i>Activity and location</i>) (<i>Include ZIP Code</i>)	
PART I - ALL PUBLICATIONS (EXCEPT RPSTL AND SC/SM) AND BLANK FORMS							
PUBLICATION/FORM NUMBER						DATE	TITLE
ITEM NO.	PAGE NO.	PARA-GRAPH	LINE NO.*	FIGURE NO.	TABLE NO.	RECOMMENDED CHANGES AND REASON <i>(Exact wording of recommended change must be given)</i>	
<i>* Reference to line numbers within the paragraph or subparagraph.</i>							
TYPED NAME, GRADE OR TITLE				TELEPHONE EXCHANGE/AUTOVON, PLUS EXTENSION		SIGNATURE	

TO: <i>(Forward to proponent of publication or form) (Include ZIP Code)</i>	FROM: <i>(Activity and location) (Include ZIP Code)</i>	DATE
--	--	-------------

PART II- REPAIR PARTS AND SPECIAL TOOL LISTS AND SUPPLY CATALOGS/SUPPLY MANUALS

PUBLICATION/FORM NUMBER			DATE		TITLE			
PAGE NO.	COLM NO.	LINE NO.	FEDERAL STOCK NUMBER	REFERENCE NO.	FIGURE NO.	ITEM NO.	TOTAL NO. OF MAJOR ITEMS SUPPROTED	RECOMMENDED ACTION

PART III - REMARKS *(Any general remarks or recommendations, or suggestions for improvement of publications and blank forms. Additional blank sheets may be used if more space is needed.)*

TYPED NAME, GRADE OR TITLE	TELEPHONE EXCHANGE/AUTOVON, PLUS EXTENSION	SIGNATURE
----------------------------	--	-----------

RECOMMENDED CHANGES TO PUBLICATIONS AND BLANK FORMS						DATE
For use of this form, see AR 310-1; the proponent agency is the US Army Adjutant General Center.						Use Part II (reverse) for Repair Parts and Special Tool Lists (RPSTL) and Supply Catalogs/Supply Manuals (SC/SM).
TO: (Forward to proponent of publication or form) (Include ZIP Code)						FROM: (Activity and location) (Include ZIP Code)
PART I - ALL PUBLICATIONS (EXCEPT RPSTL AND SC/SM) AND BLANK FORMS						
PUBLICATION/FORM NUMBER					DATE	TITLE
ITEM NO.	PAGE NO.	PARA-GRAPH	LINE NO.*	FIGURE NO.	TABLE NO.	RECOMMENDED CHANGES AND REASON <i>(Exact wording of recommended change must be given)</i>
<i>* Reference to line numbers within the paragraph or subparagraph.</i>						
TYPED NAME, GRADE OR TITLE				TELEPHONE EXCHANGE/AUTOVON, PLUS EXTENSION		SIGNATURE

TO: <i>(Forward to proponent of publication or form) (Include ZIP Code)</i>	FROM: <i>(Activity and location) (Include ZIP Code)</i>	DATE
--	--	-------------

PART II- REPAIR PARTS AND SPECIAL TOOL LISTS AND SUPPLY CATALOGS/SUPPLY MANUALS

PUBLICATION/FORM NUMBER			DATE		TITLE			
PAGE NO.	COLM NO.	LINE NO.	FEDERAL STOCK NUMBER	REFERENCE NO.	FIGURE NO.	ITEM NO.	TOTAL NO. OF MAJOR ITEMS SUPPROTED	RECOMMENDED ACTION

PART III - REMARKS *(Any general remarks or recommendations, or suggestions for improvement of publications and blank forms. Additional blank sheets may be used if more space is needed.)*

TYPED NAME, GRADE OR TITLE	TELEPHONE EXCHANGE/AUTOVON, PLUS EXTENSION	SIGNATURE
----------------------------	--	-----------

RECOMMENDED CHANGES TO PUBLICATIONS AND BLANK FORMS						DATE
For use of this form, see AR 310-1; the proponent agency is the US Army Adjutant General Center.						Use Part II (reverse) for Repair Parts and Special Tool Lists (RPSTL) and Supply Catalogs/Supply Manuals (SC/SM).
TO: (Forward to proponent of publication or form) (Include ZIP Code)						FROM: (Activity and location) (Include ZIP Code)
PART I - ALL PUBLICATIONS (EXCEPT RPSTL AND SC/SM) AND BLANK FORMS						
PUBLICATION/FORM NUMBER					DATE	TITLE
ITEM NO.	PAGE NO.	PARA-GRAPH	LINE NO.*	FIGURE NO.	TABLE NO.	RECOMMENDED CHANGES AND REASON <i>(Exact wording of recommended change must be given)</i>
<i>* Reference to line numbers within the paragraph or subparagraph.</i>						
TYPED NAME, GRADE OR TITLE				TELEPHONE EXCHANGE/AUTOVON, PLUS EXTENSION		SIGNATURE

TO: (Forward to proponent of publication or form) (Include ZIP Code)	FROM: (Activity and location) (Include ZIP Code)	DATE
---	---	-------------

PART II- REPAIR PARTS AND SPECIAL TOOL LISTS AND SUPPLY CATALOGS/SUPPLY MANUALS

PUBLICATION/FORM NUMBER			DATE		TITLE			
PAGE NO.	COLM NO.	LINE NO.	FEDERAL STOCK NUMBER	REFERENCE NO.	FIGURE NO.	ITEM NO.	TOTAL NO. OF MAJOR ITEMS SUPPROTED	RECOMMENDED ACTION

PART III - REMARKS (Any general remarks or recommendations, or suggestions for improvement of publications and blank forms. Additional blank sheets may be used if more space is needed.)

--

TYPED NAME, GRADE OR TITLE	TELEPHONE EXCHANGE/AUTOVON, PLUS EXTENSION	SIGNATURE
----------------------------	--	-----------

By Order of the Secretary of the Army:

PETER J. SCHOOMAKER
General, United States Army
Chief of Staff

Official:



JOYCE E. MORROW
Administrative Assistant to the
Secretary of the Army
0629110

Distribution:

To be distributed in accordance with the initial distribution number (IDN) 256919,
requirements for TM 9-4120-428-24P.

PIN: 083654-000